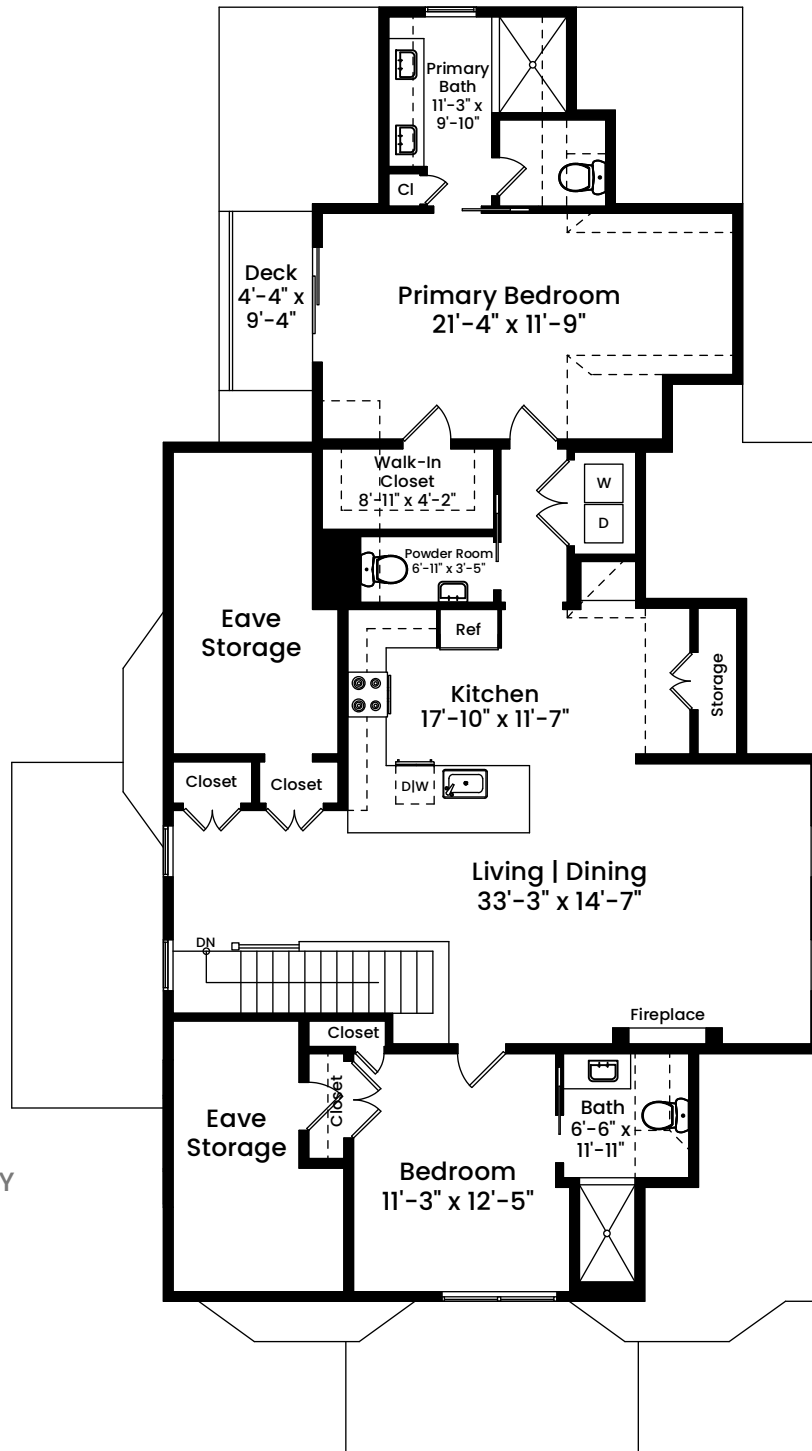
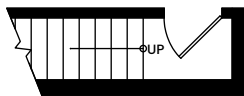


8 Sycamore Street, Unit D | Somerville, MA 02143

THIRD FLOOR
CEILING HEIGHT 9'-10"



SECOND FLOOR ENTRY
CEILING HEIGHT 8'-2"



Architecturally drafted in October 2022 by:
National Floor Plans (800) 328-0217
Associate Member | American Institute of Architects
Contact www.nationalfloorplans.com for .dwg AutoCAD files
or square footage questions about this property.



1 1 2 4 8
Scale 1 inch = 10 feet

Dimensions are not guaranteed and are provided for informational purposes only.
Individual room dimensions are not used to calculate overall square footage.
National Floor Plans follows ANSI guidelines for calculating square footage.