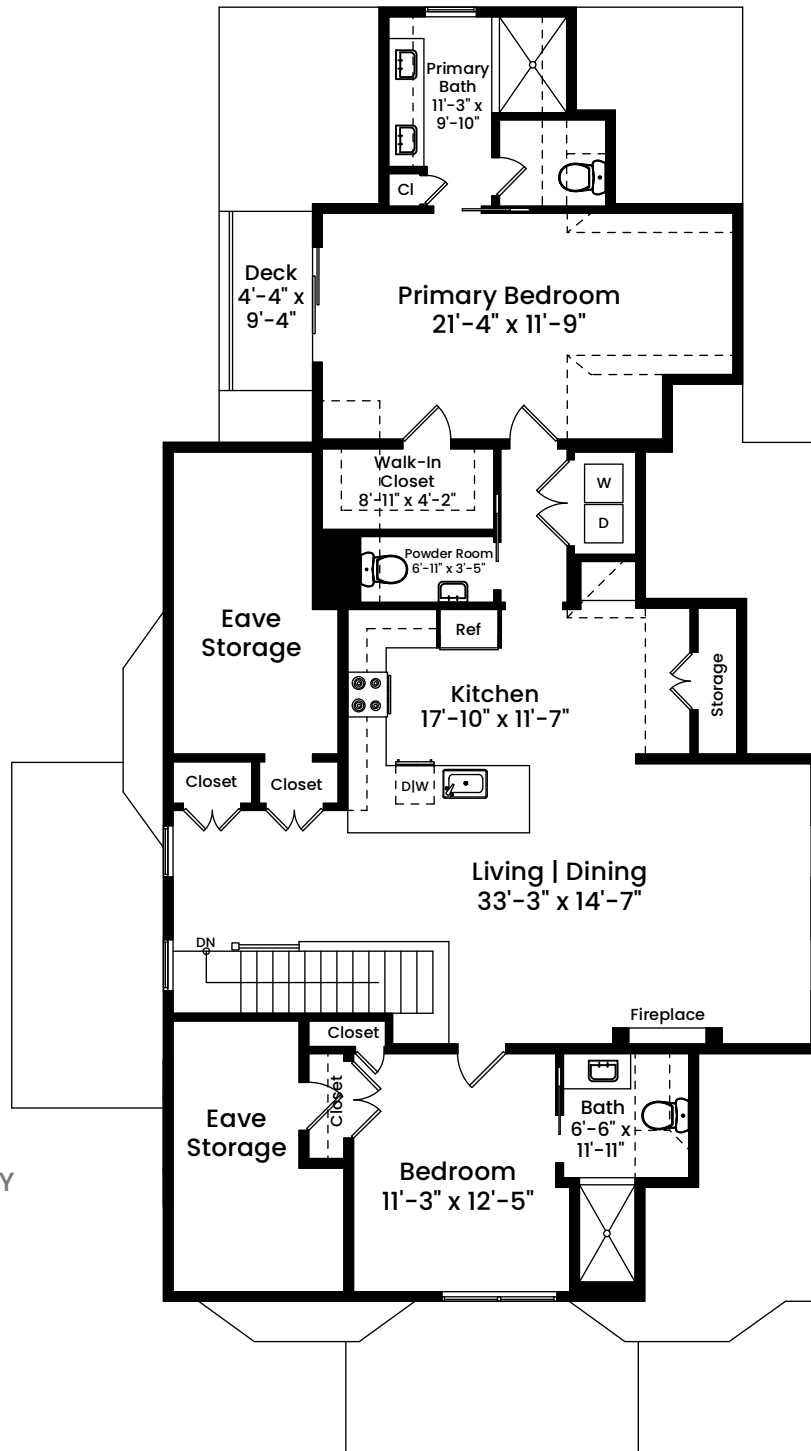
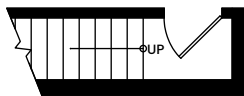


# 8 Sycamore Street, Unit D | Somerville, MA 02143

THIRD FLOOR  
CEILING HEIGHT 9'-10"



SECOND FLOOR ENTRY  
CEILING HEIGHT 8'-2"



1 1 2 4 8  
Scale 1 inch = 10 feet

Architecturally drafted in October 2022 by:  
National Floor Plans (800) 328-0217  
Associate Member | American Institute of Architects  
Contact [www.nationalfloorplans.com](http://www.nationalfloorplans.com) for .dwg AutoCAD files  
or square footage questions about this property.

Dimensions are not guaranteed and are provided for informational purposes only.  
Individual room dimensions are not used to calculate overall square footage.  
National Floor Plans follows ANSI guidelines for calculating square footage.