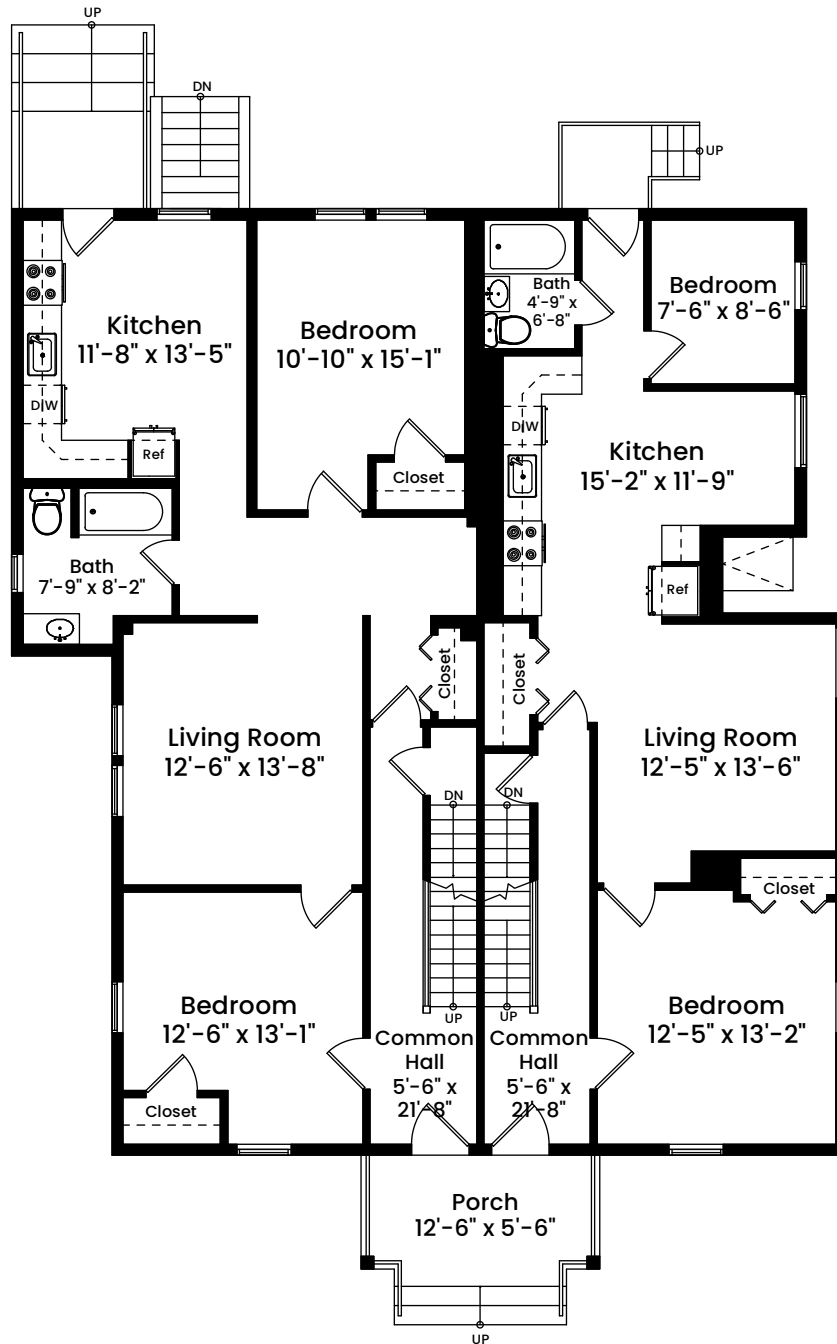


84-86 Cross Street | Somerville, MA 02145

FIRST FLOOR
CEILING HEIGHT 8'-7"



Architecturally drafted in March 2024 by:
National Floor Plans (800) 328-0217
Associate Member | American Institute of Architects
Contact www.nationalfloorplans.com for .dwg AutoCAD files
or square footage questions about this property.

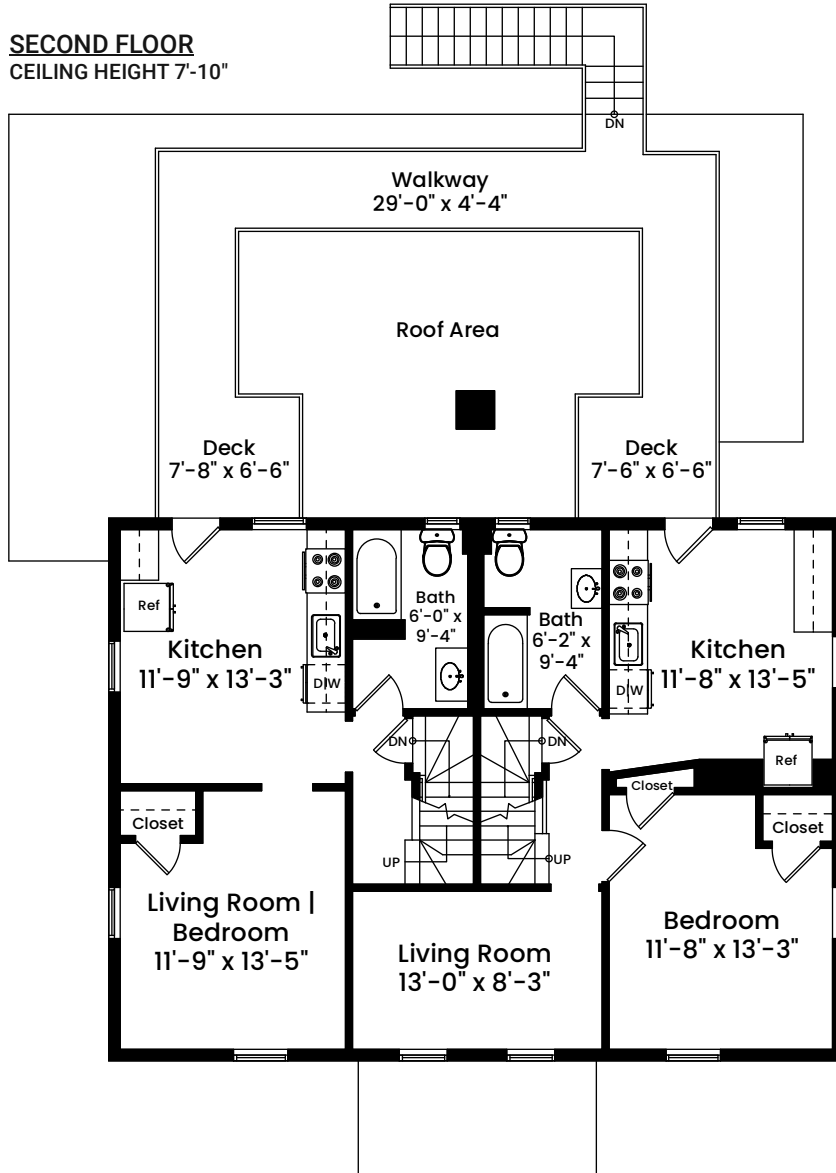


1 1 2 4 8
Scale 1 inch = 10 feet

Dimensions are not guaranteed and are provided for informational purposes only.
Individual room dimensions are not used to calculate overall square footage.
National Floor Plans follows ANSI guidelines for calculating square footage.

84-86 Cross Street | Somerville, MA 02145

SECOND FLOOR
CEILING HEIGHT 7'-10"



Architecturally drafted in March 2024 by:
National Floor Plans (800) 328-0217
Associate Member | American Institute of Architects
Contact www.nationalfloorplans.com for .dwg AutoCAD files
or square footage questions about this property.

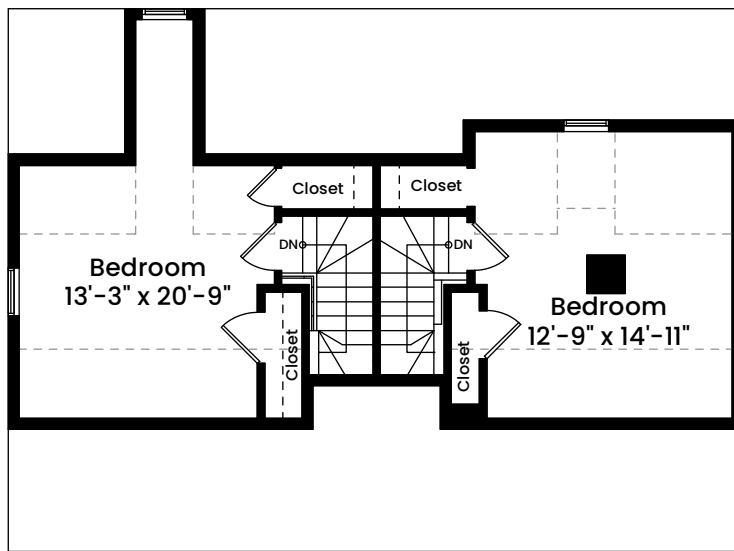


1 1 2 4 8
Scale 1 inch = 10 feet

Dimensions are not guaranteed and are provided for informational purposes only.
Individual room dimensions are not used to calculate overall square footage.
National Floor Plans follows ANSI guidelines for calculating square footage.

84-86 Cross Street | Somerville, MA 02145

THIRD FLOOR CEILING HEIGHT 7'-3"



Architecturally drafted in March 2024 by:
National Floor Plans (800) 328-0217
Associate Member | American Institute of Architects
Contact www.nationalfloorplans.com for .dwg AutoCAD files
or square footage questions about this property.

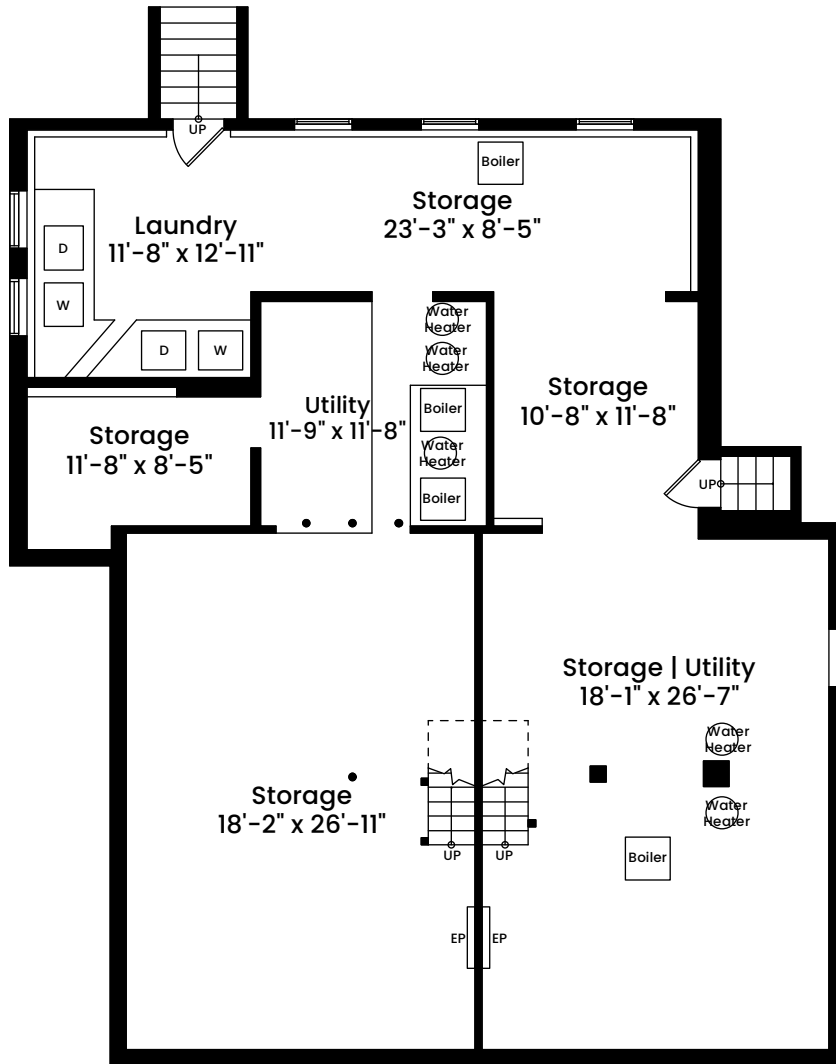


1 1 2 4 8
Scale 1 inch = 10 feet

Dimensions are not guaranteed and are provided for informational purposes only.
Individual room dimensions are not used to calculate overall square footage.
National Floor Plans follows ANSI guidelines for calculating square footage.

84-86 Cross Street | Somerville, MA 02145

BASEMENT
CEILING HEIGHT 6'-6"



Architecturally drafted in March 2024 by:
National Floor Plans (800) 328-0217
Associate Member | American Institute of Architects
Contact www.nationalfloorplans.com for .dwg AutoCAD files
or square footage questions about this property.

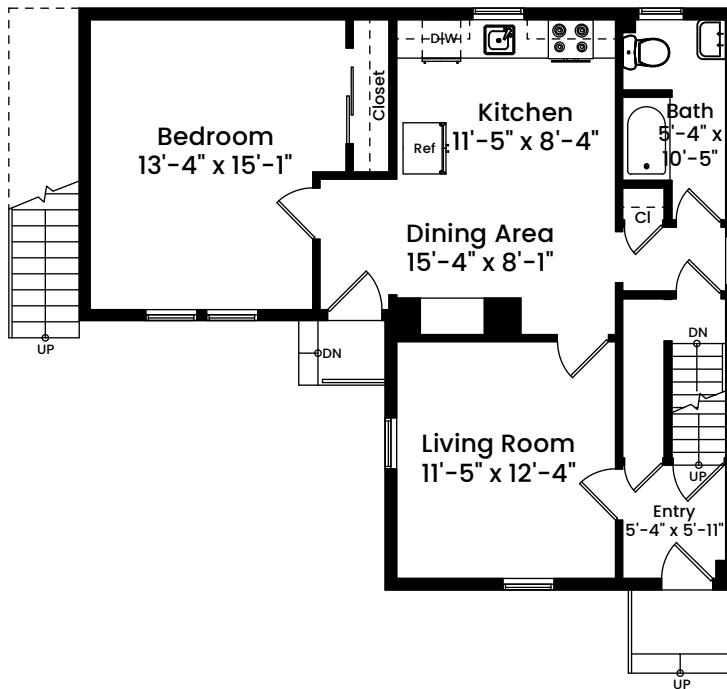


1 1 2 4 8
Scale 1 inch = 10 feet

Dimensions are not guaranteed and are provided for informational purposes only.
Individual room dimensions are not used to calculate overall square footage.
National Floor Plans follows ANSI guidelines for calculating square footage.

86R Cross Street | Somerville, MA 02145

86R - FIRST FLOOR CEILING HEIGHT 8'-6"



Architecturally drafted in March 2024 by:
National Floor Plans (800) 328-0217
Associate Member | American Institute of Architects
Contact www.nationalfloorplans.com for .dwg AutoCAD files
or square footage questions about this property.

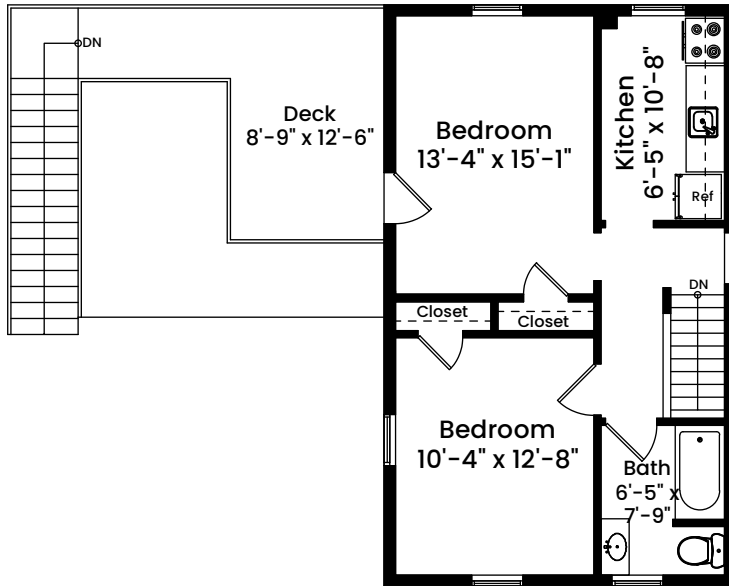


1 1 2 4 8
Scale 1 inch = 10 feet

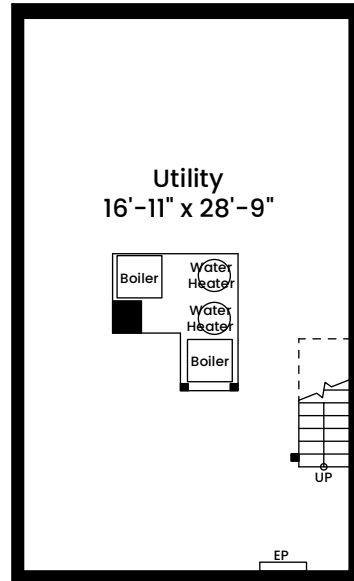
Dimensions are not guaranteed and are provided for informational purposes only.
Individual room dimensions are not used to calculate overall square footage.
National Floor Plans follows ANSI guidelines for calculating square footage.

86R Cross Street | Somerville, MA 02145

86R - SECOND FLOOR CEILING HEIGHT 7'-4"



86R - BASEMENT CEILING HEIGHT 6'-8"



Architecturally drafted in March 2024 by:
National Floor Plans (800) 328-0217
Associate Member | American Institute of Architects
Contact www.nationalfloorplans.com for .dwg AutoCAD files
or square footage questions about this property.



1 1 2 4 8
Scale 1 inch = 10 feet

Dimensions are not guaranteed and are provided for informational purposes only.
Individual room dimensions are not used to calculate overall square footage.
National Floor Plans follows ANSI guidelines for calculating square footage.