

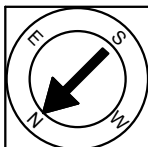
First Floor Plan  
Ceiling Height = 7'-11"

7 Lathrop Place  
Boston, MA 02113



Scale 1/8" = 1'-0"

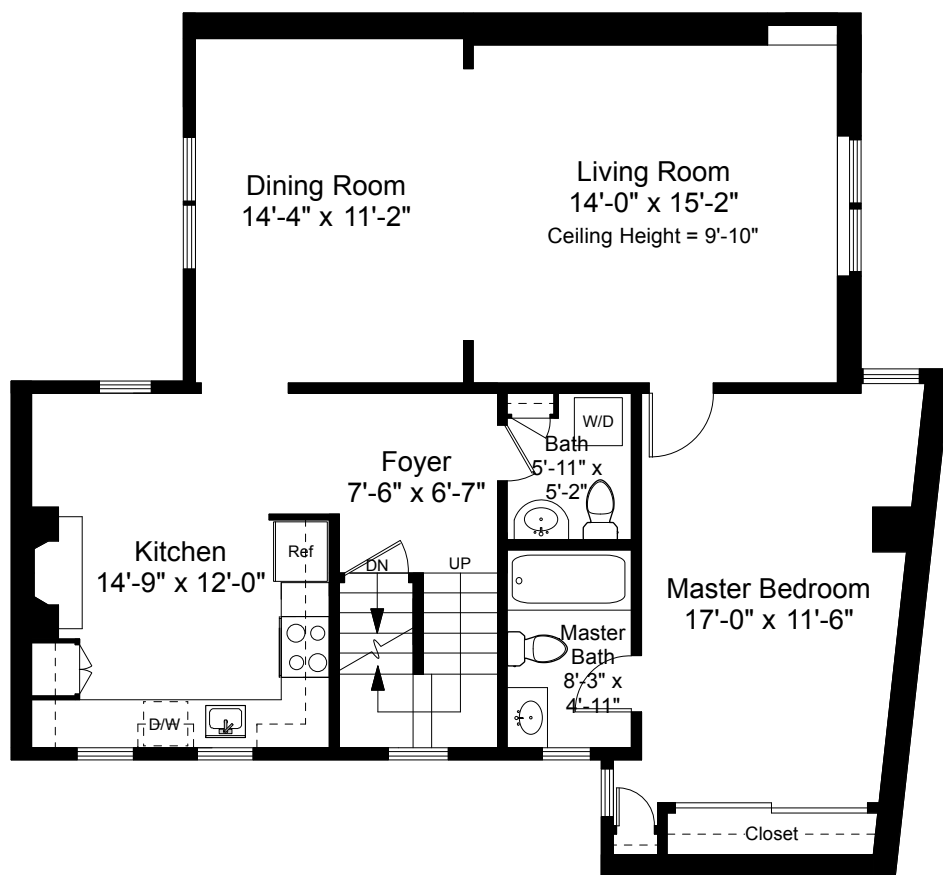
1



Completed: August 2017

Note: Dimensions are not guaranteed and are provided for informational purposes only. Individual room dimensions are not used to calculate overall square footage.

  
NATIONAL  
FLOOR PLANS  
& PHOTOGRAPHY  
(800) 328-0217



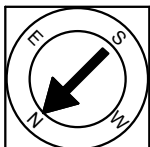
Second Floor Plan  
Ceiling Height = 7'-5"

7 Lathrop Place  
Boston, MA 02113



Scale 1/8" = 1'-0"

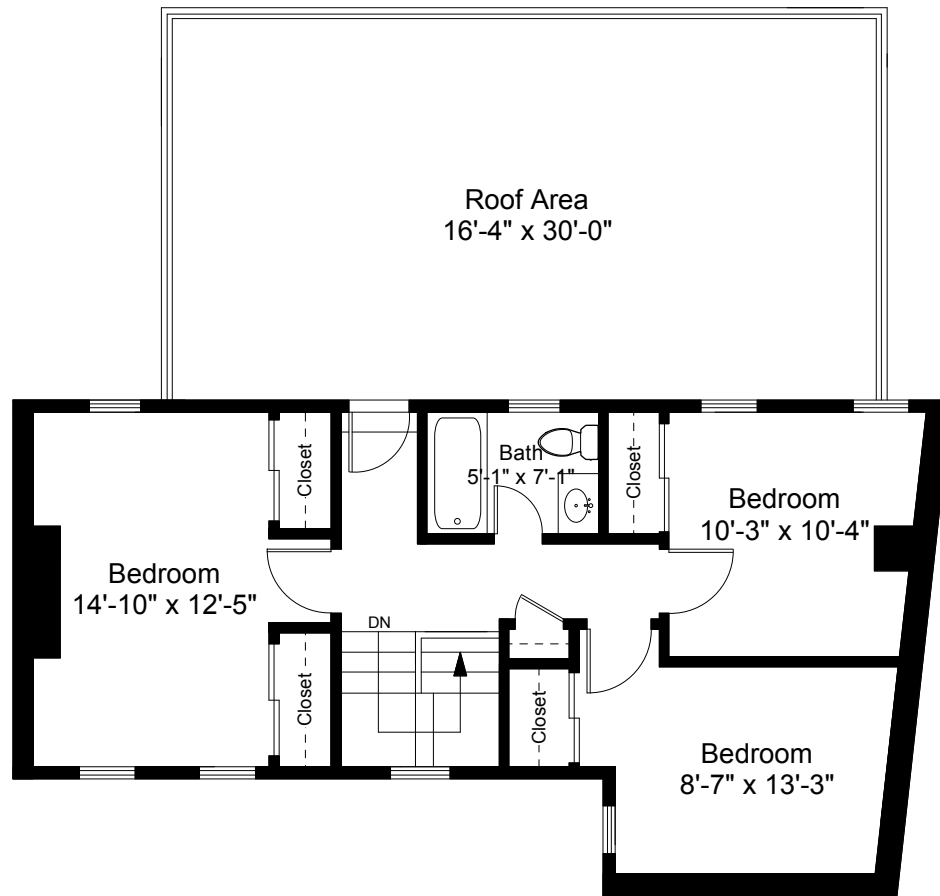
2



Completed: August 2017

Note: Dimensions are not guaranteed and are provided for informational purposes only. Individual room dimensions are not used to calculate overall square footage.

NATIONAL  
FLOOR PLANS  
& PHOTOGRAPHY  
(800) 328-0217



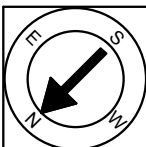
Third Floor Plan  
Ceiling Height = 7'-5"

7 Lathrop Place  
Boston, MA 02113



Scale 1/8" = 1'-0"

3



Completed: August 2017

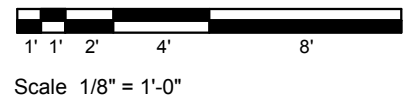
Note: Dimensions are not guaranteed and are provided for informational purposes only. Individual room dimensions are not used to calculate overall square footage.

  
NATIONAL  
FLOOR PLANS  
& PHOTOGRAPHY  
(800) 328-0217

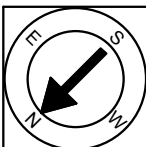


Lower Level Plan  
Ceiling Height = 6'-4"

7 Lathrop Place  
Boston, MA 02113



4



Completed: August 2017

Note: Dimensions are not guaranteed and are provided for informational purposes only. Individual room dimensions are not used to calculate overall square footage.

**NATIONAL**  
FLOOR PLANS  
& PHOTOGRAPHY  
(800) 328-0217