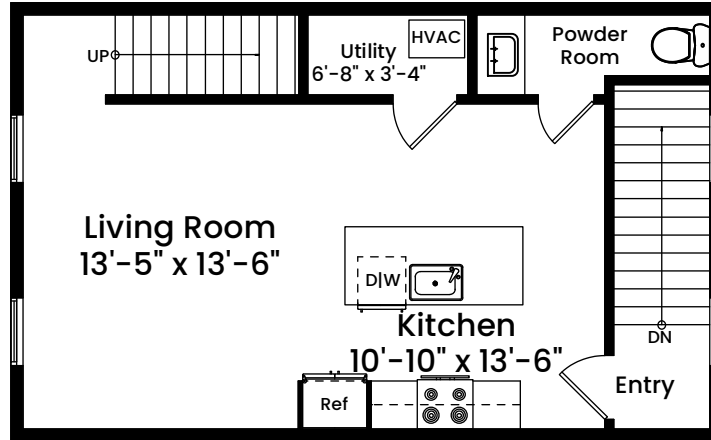


# 7 Aldersey Street, Unit C | Somerville, MA 02143

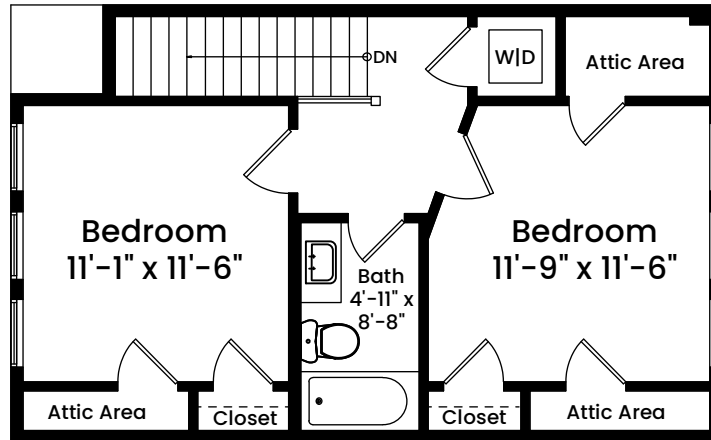
## SECOND FLOOR

CEILING HEIGHT 8'-3"



## THIRD FLOOR

CEILING HEIGHT 8'-3"



1 1 2 4 8  
Scale 1/8" inch = 1 foot

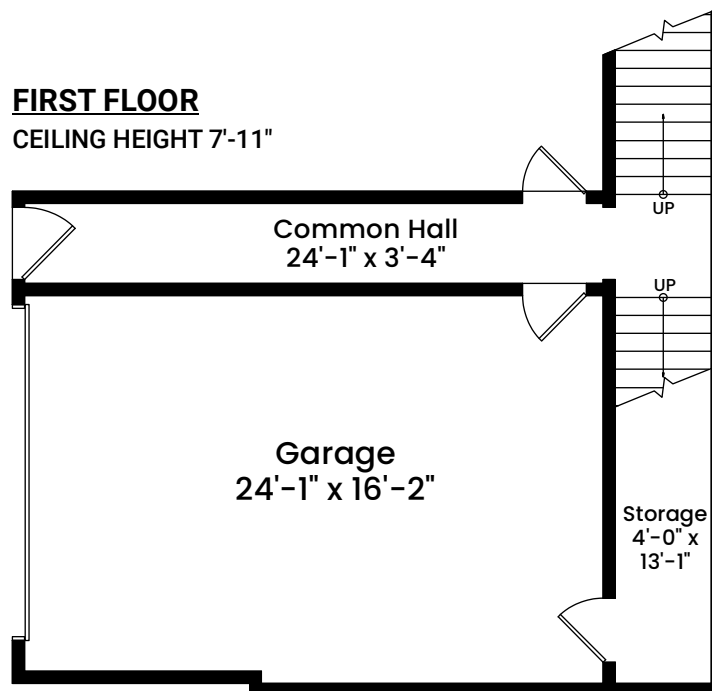
Architecturally drafted in July 2024 by:  
National Floor Plans (800) 328-0217  
Associate Member | American Institute of Architects  
Contact [www.nationalfloorplans.com](http://www.nationalfloorplans.com) for .dwg AutoCAD files  
or square footage questions about this property.

Dimensions are not guaranteed and are provided for informational purposes only.  
Individual room dimensions are not used to calculate overall square footage.  
National Floor Plans follows ANSI guidelines for calculating square footage.  
Unit area has been calculated to the exterior face of exterior walls and  
centerline of demising walls.

# 7 Aldersey Street, Unit C | Somerville, MA 02143

## FIRST FLOOR

CEILING HEIGHT 7'-11"



1 1 2 4 8

Scale 1/8" inch = 1 foot

Architecturally drafted in July 2024 by:  
National Floor Plans (800) 328-0217  
Associate Member | American Institute of Architects  
Contact [www.nationalfloorplans.com](http://www.nationalfloorplans.com) for .dwg AutoCAD files  
or square footage questions about this property.

Dimensions are not guaranteed and are provided for informational purposes only.  
Individual room dimensions are not used to calculate overall square footage.  
National Floor Plans follows ANSI guidelines for calculating square footage.  
Unit area has been calculated to the exterior face of exterior walls and  
centerline of demising walls.