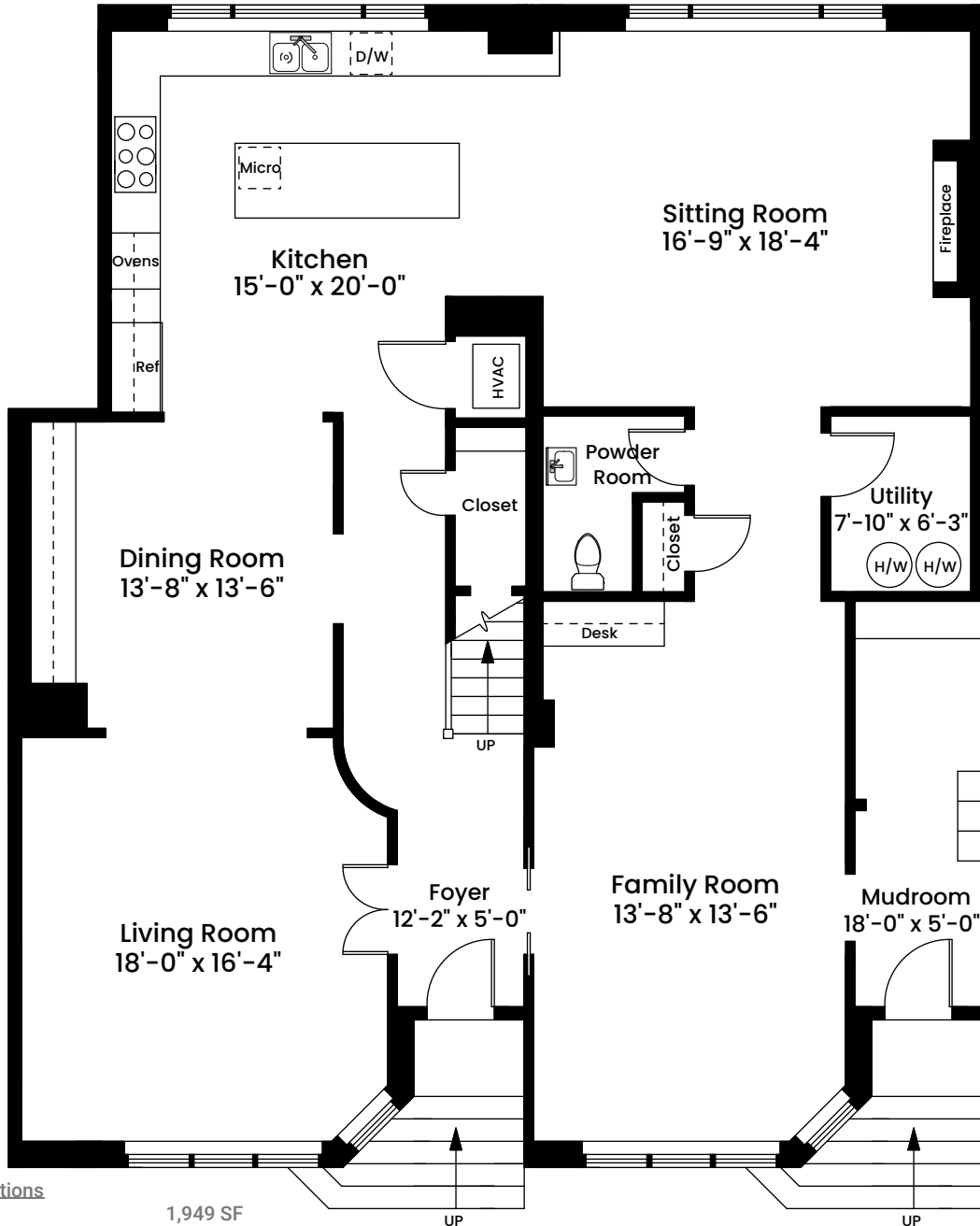


# 50 Battery Street | Boston, MA 02109

## TH 103 & 104

FIRST FLOOR  
CEILING HEIGHT 8'-6"



**Area Calculations**

First Floor	1,949 SF
Second Floor	1,789 SF
Total Unit Area (Excluding Unit Demising Walls)	3,738 SF
Terrace	271 SF
Total Area	4,009 SF

Architecturally drafted in March 2021 by:  
National Floor Plans  
Associate Member | American Institute of Architects  
Contact [www.nationalfloorplans.com](http://www.nationalfloorplans.com) for .dwg AutoCAD files  
or square footage questions about this property.



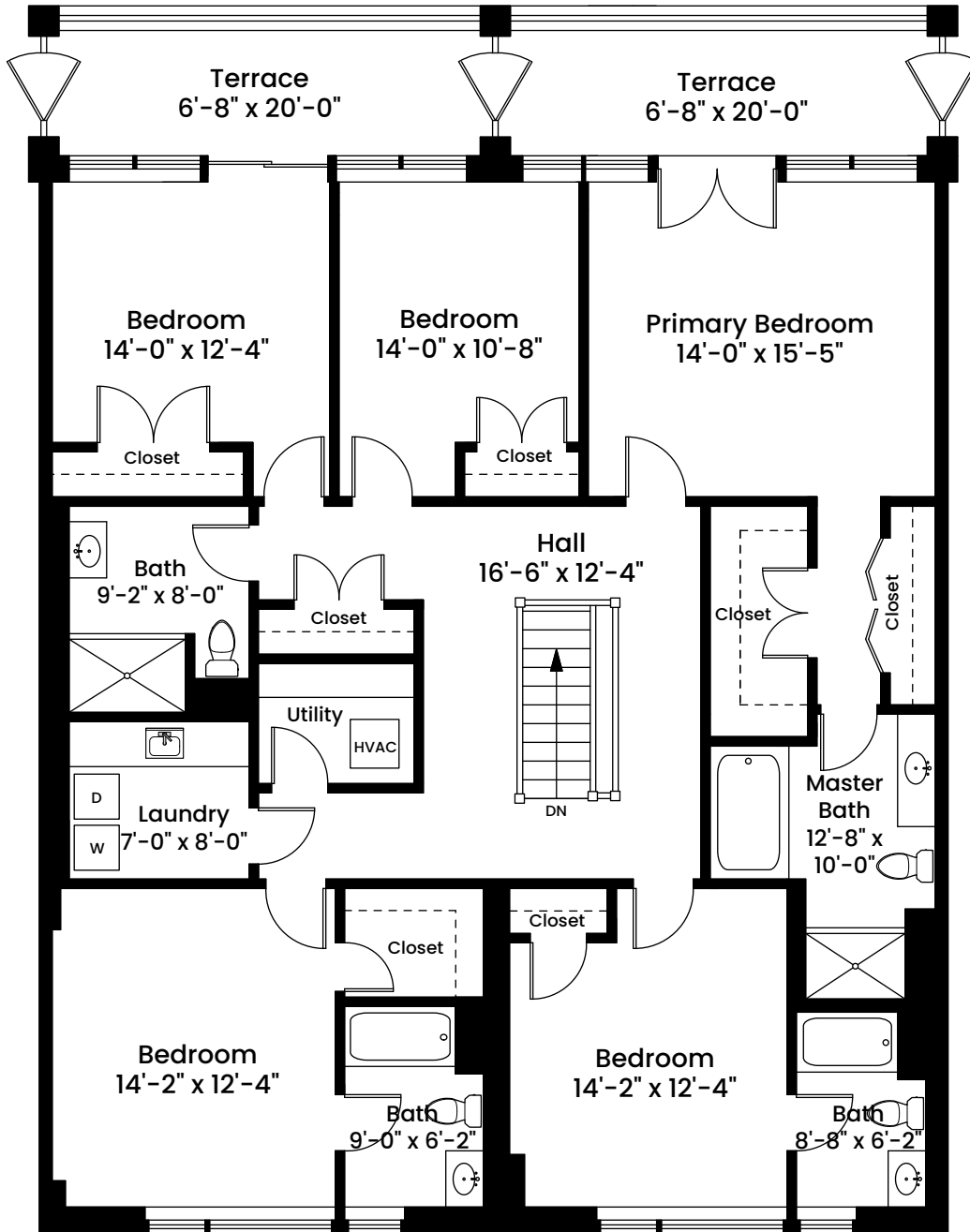
1 1 2 4 8  
Scale 1/8" inch = 1 foot

Dimensions are not guaranteed and are provided for informational purposes only.  
Individual room dimensions are not used to calculate overall square footage.

# 50 Battery Street | Boston, MA 02109

## TH 103 & 104

SECOND FLOOR  
CEILING HEIGHT 8'-2"



Area Calculations

First Floor	1,949 SF
Second Floor	1,789 SF
Total Unit Area	3,738 SF
(Excluding Unit Demising Walls)	
Terrace	271 SF
Total Area	4,009 SF

Architecturally drafted in March 2021 by:  
National Floor Plans  
Associate Member | American Institute of Architects  
Contact [www.nationalfloorplans.com](http://www.nationalfloorplans.com) for .dwg AutoCAD files  
or square footage questions about this property.



1 1 2 4 8  
Scale 1/8" inch = 1 foot

Dimensions are not guaranteed and are provided for informational purposes only.  
Individual room dimensions are not used to calculate overall square footage.