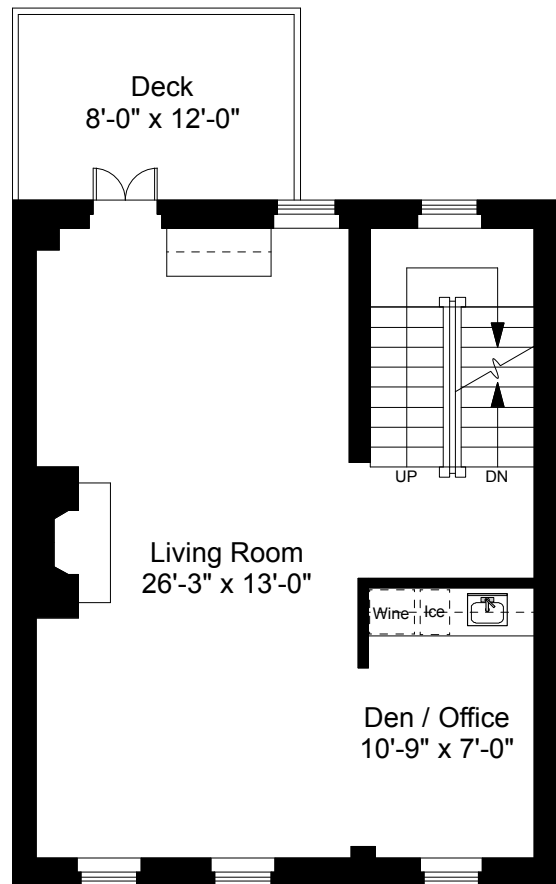


First Floor Plan  
Ceiling Height = 9'-10"



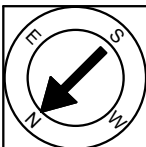
Parlor Floor Plan  
Ceiling Height = 10'-3"

450 Shawmut Avenue  
Boston, MA 02118



Scale 1/8" = 1'-0"

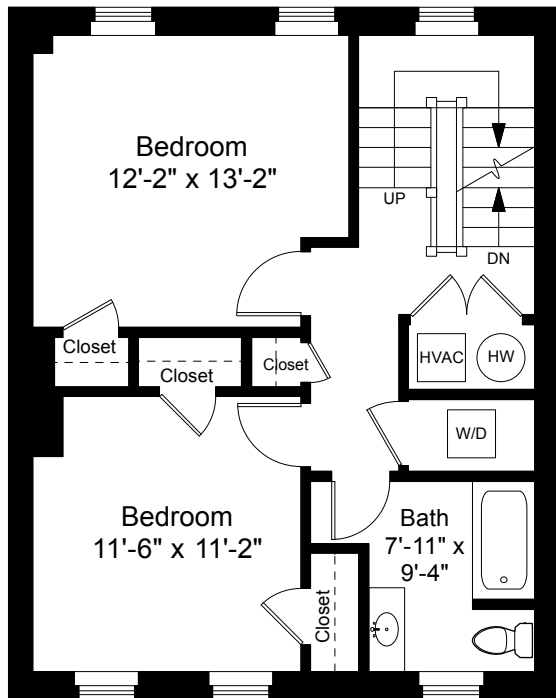
1



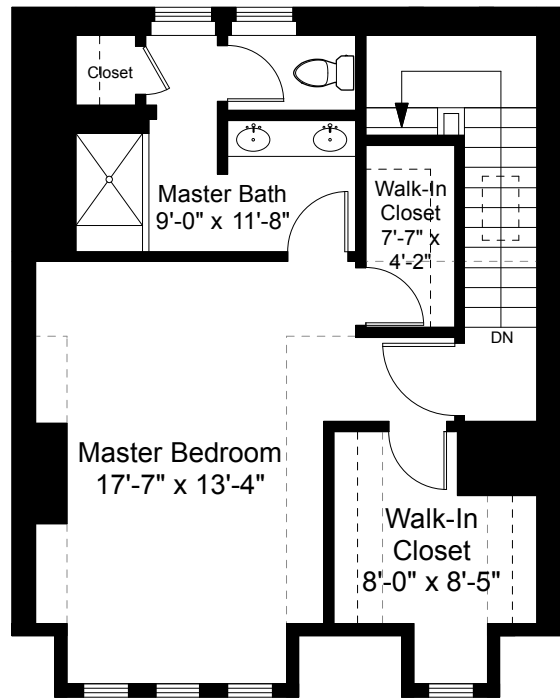
Completed: March 2018

Note: Dimensions are not guaranteed and are provided for informational purposes only. Individual room dimensions are not used to calculate overall square footage.

**NATIONAL**  
—FLOOR PLANS—  
& PHOTOGRAPHY  
(800) 328-0217



Third Floor Plan  
Ceiling Height = 9'-0"



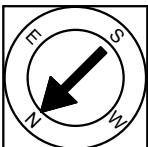
Master Floor Plan  
Ceiling Height = 11'-3"

450 Shawmut Avenue  
Boston, MA 02118



Scale 1/8" = 1'-0"

2



Completed: March 2018

Note: Dimensions are not guaranteed and are provided for informational purposes only. Individual room dimensions are not used to calculate overall square footage.

**NATIONAL**  
—FLOOR PLANS—  
& PHOTOGRAPHY  
(800) 328-0217