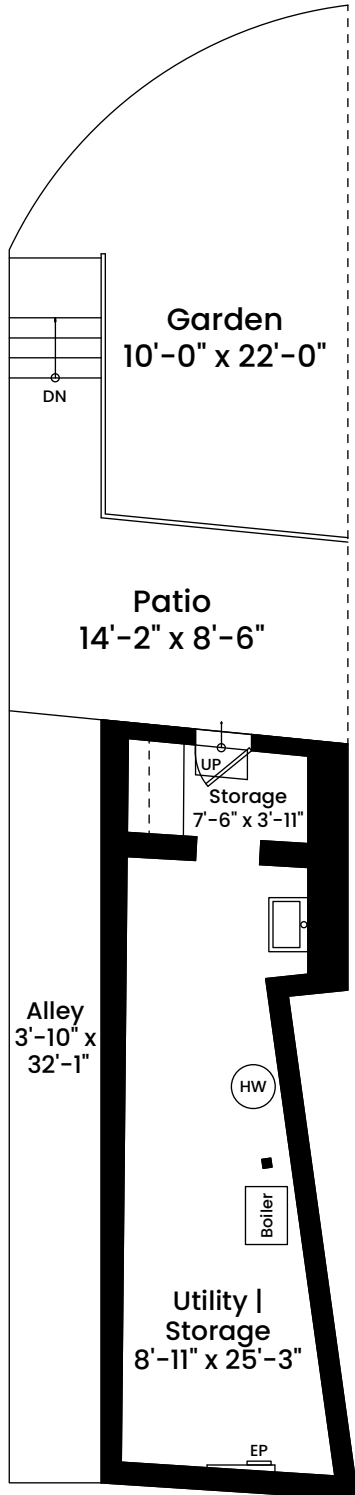
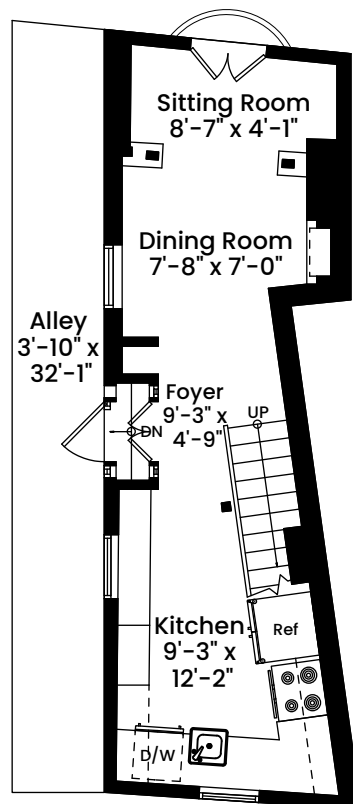


44 Hull Street | Boston, MA 02113



BASEMENT
CEILING HEIGHT 6'-10"

FIRST FLOOR
CEILING HEIGHT 7'-8"



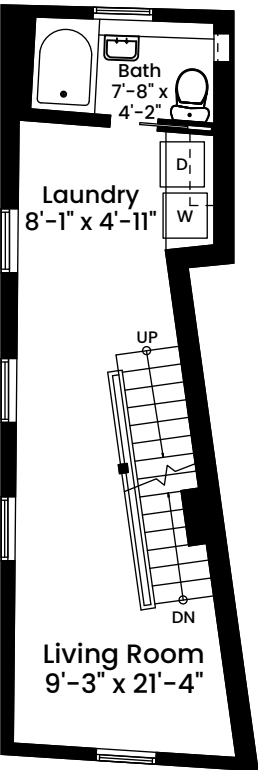
1 1 2 4 8
Scale 1/8" = 1 foot

Architecturally drafted in August 2021 by:
National Floor Plans
Associate Member | American Institute of Architects
Contact www.nationalfloorplans.com for .dwg AutoCAD files
or square footage questions about this property.

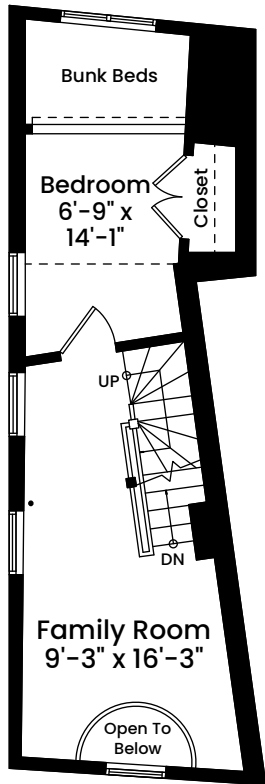
Dimensions are not guaranteed and are provided for informational purposes only.
Individual room dimensions are not used to calculate overall square footage.
National Floor Plans follows ANSI guidelines for calculating square footage.

44 Hull Street | Boston, MA 02113

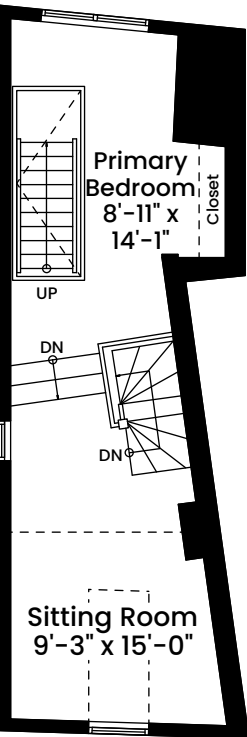
SECOND FLOOR
CEILING HEIGHT 6'-9"



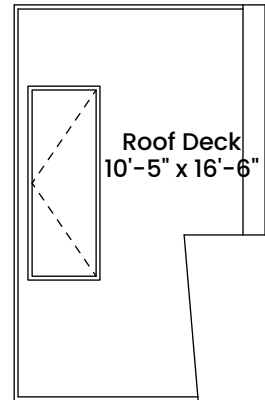
THIRD FLOOR
CEILING HEIGHT 6'-8"



FOURTH FLOOR
CEILING HEIGHT 9'-6"



ROOF DECK



Architecturally drafted in August 2021 by:
National Floor Plans
Associate Member | American Institute of Architects
Contact www.nationalfloorplans.com for .dwg AutoCAD files
or square footage questions about this property.



1 1 2 4 8
Scale 1/8" inch = 1 foot

Dimensions are not guaranteed and are provided for informational purposes only.
Individual room dimensions are not used to calculate overall square footage.
National Floor Plans follows ANSI guidelines for calculating square footage.