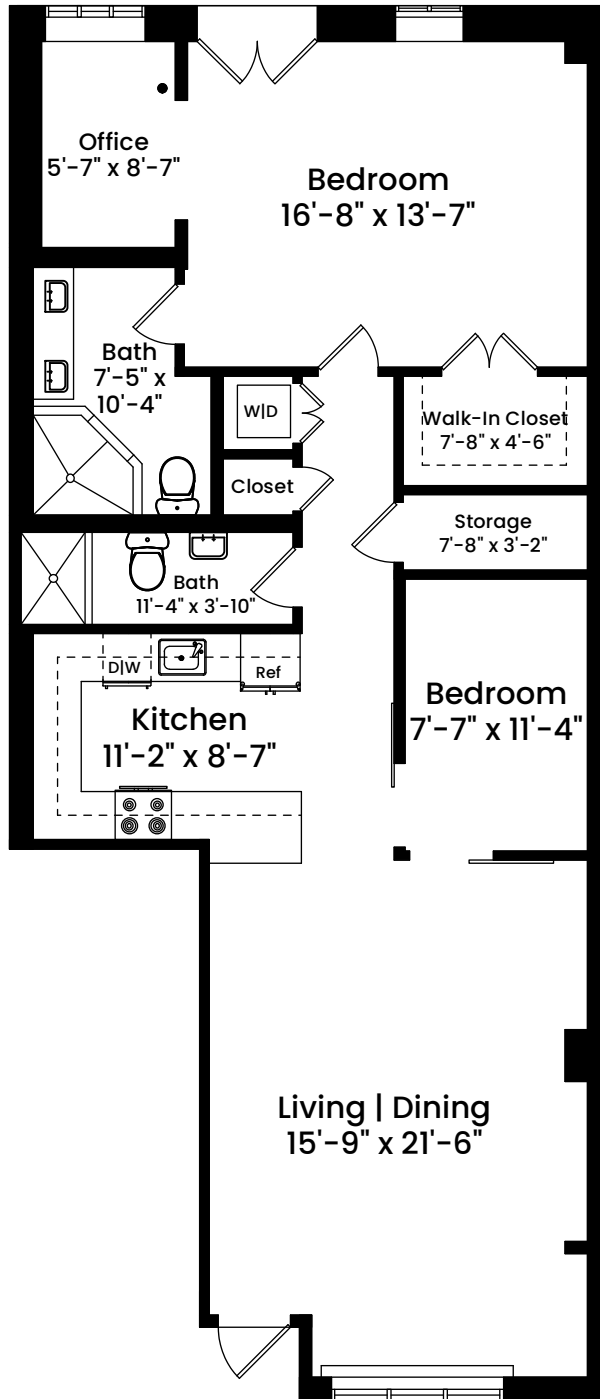


40 Commercial Wharf East | Boston, MA 02110

UNIT 40
CEILING HEIGHT 9'-3"



Architecturally drafted in June 2021 by:
National Floor Plans
Associate Member | American Institute of Architects
Contact www.nationalfloorplans.com for .dwg AutoCAD files
or square footage questions about this property.



1 1 2 4 8
Scale 1/8" = 1 foot

Dimensions are not guaranteed and are provided for informational purposes only.
Individual room dimensions are not used to calculate overall square footage.
National Floor Plans follows ANSI guidelines for calculating square footage.