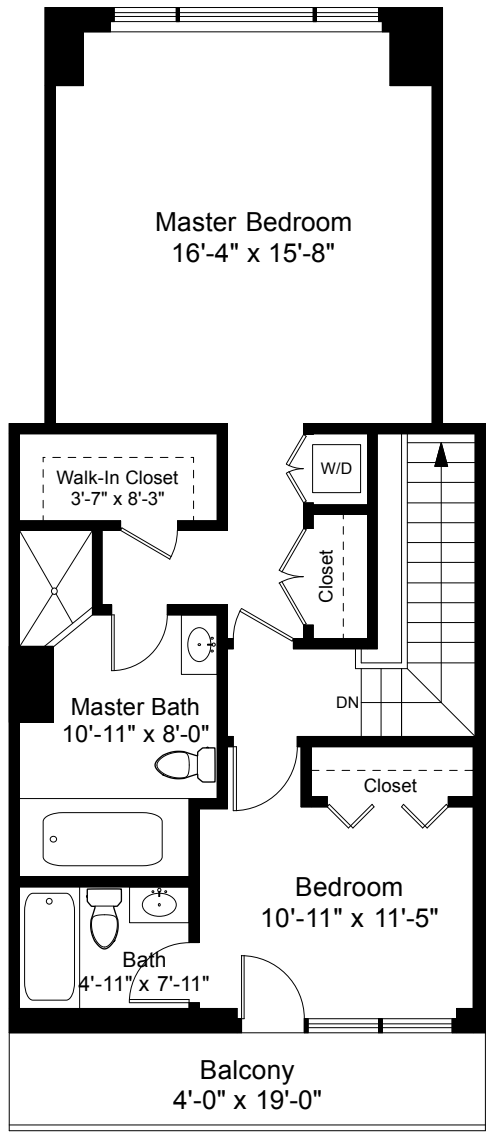


First Floor Plan
Ceiling Height = 8'-8"



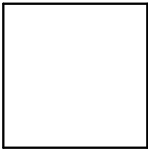
Second Floor Plan
Ceiling Height = 8'-5"

40 Battery Street, PH4
Boston, MA 02109



Scale 1/8" = 1'-0"

1



Completed: August 2016
Note: Dimensions are not guaranteed and are provided for informational purposes only. Individual room dimensions are not used to calculate overall square footage.