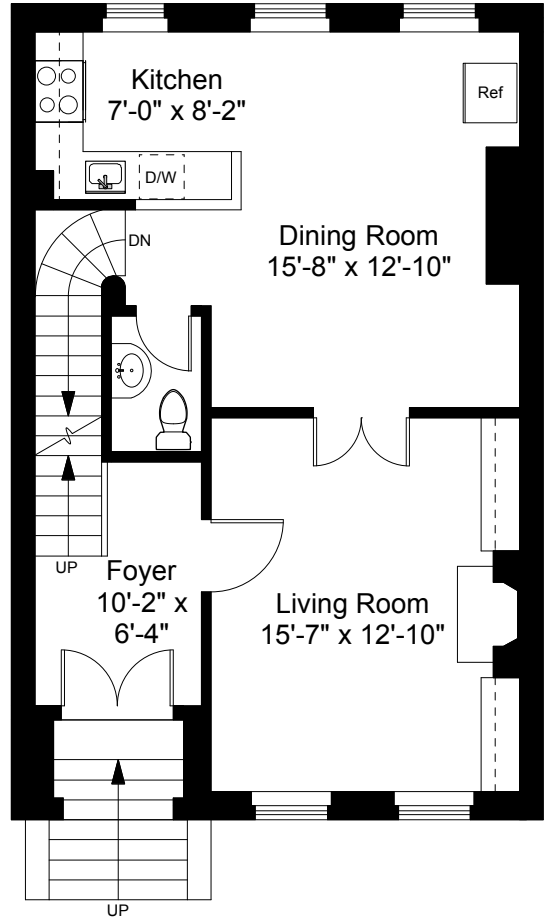


Street Level Plan  
Ceiling Height = 8'-1"



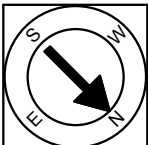
First Floor Plan  
Ceiling Height = 11'-0"

36 Milford Street  
Boston, MA 02118



Scale 1/8" = 1'-0"

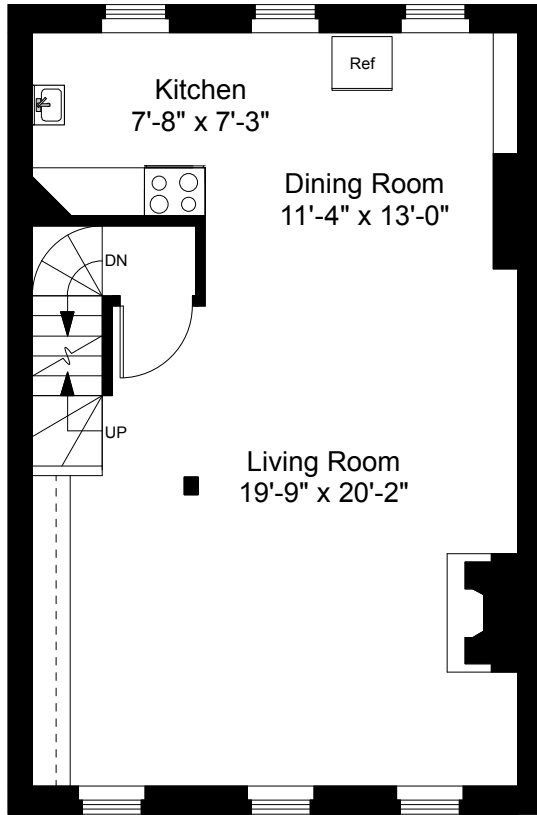
1



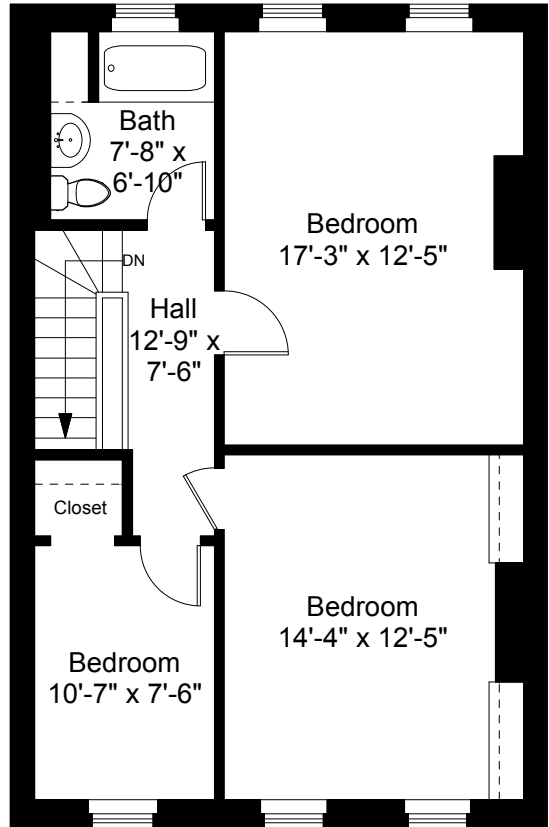
Completed: August 2018

Note: Dimensions are not guaranteed and are provided for informational purposes only. Individual room dimensions are not used to calculate overall square footage.

NATIONAL  
FLOOR PLANS  
& PHOTOGRAPHY  
(800) 328-0217



Second Floor Plan  
Ceiling Height = 8'-11"



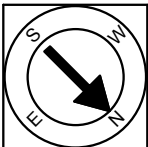
Third Floor Plan  
Ceiling Height = 8'-3"

36 Milford Street  
Boston, MA 02118



Scale 1/8" = 1'-0"

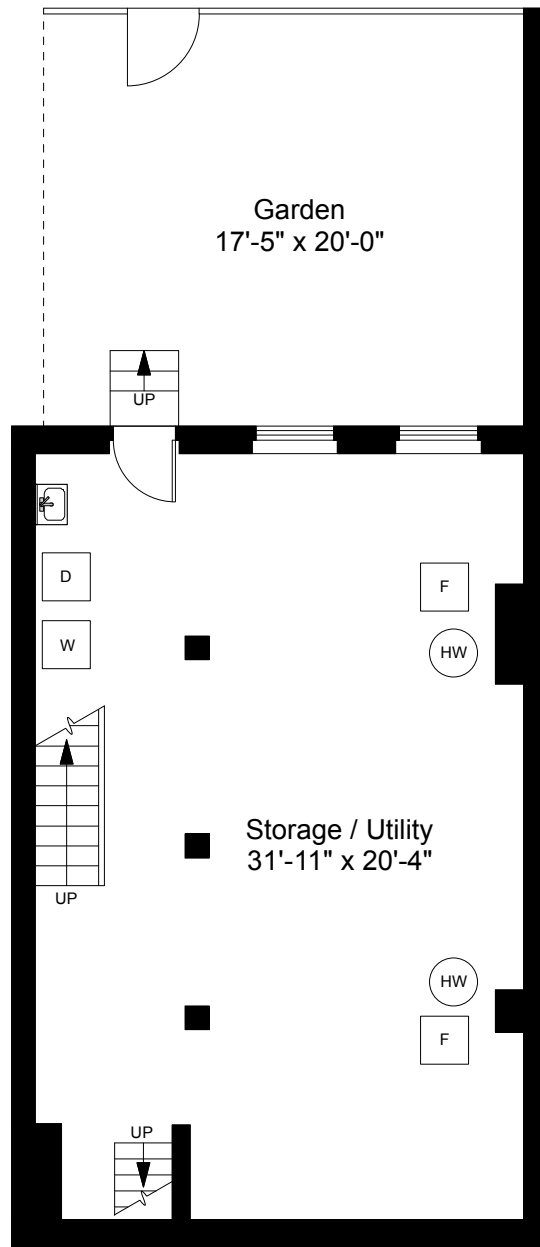
2



Completed: August 2018

Note: Dimensions are not guaranteed and are provided for informational purposes only. Individual room dimensions are not used to calculate overall square footage.

**NATIONAL**  
FLOOR PLANS  
& PHOTOGRAPHY  
(800) 328-0217



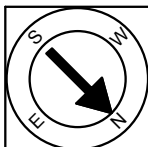
**Basement Plan**  
Ceiling Height = 6'-10"

36 Milford Street  
Boston, MA 02118



Scale 1/8" = 1'-0"

3



Completed: August 2018

*Note:* Dimensions are not guaranteed and are provided for informational purposes only. Individual room dimensions are not used to calculate overall square footage.

**NATIONAL**  
FLOOR PLANS  
& PHOTOGRAPHY  
(800) 328-0217