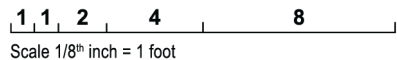
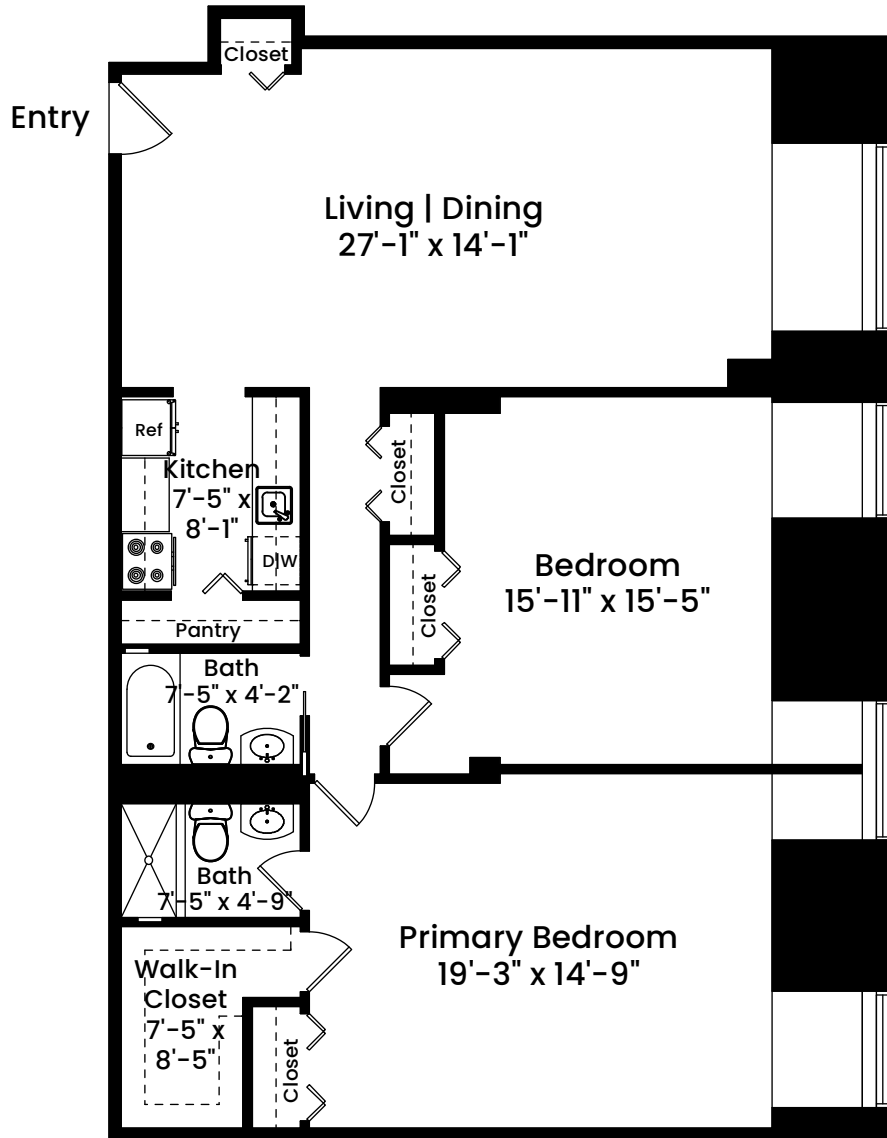


357 Commercial Street, Unit 518 | Boston, MA 02109

UNIT 518
CEILING HEIGHT 7'-8"



Architecturally drafted in May 2024 by:
National Floor Plans (800) 328-0217
Associate Member | American Institute of Architects
Contact www.nationalfloorplans.com for .dwg AutoCAD files
or square footage questions about this property.

Dimensions are not guaranteed and are provided for informational purposes only.
Individual room dimensions are not used to calculate overall square footage.
National Floor Plans follows ANSI guidelines for calculating square footage.
Unit area has been calculated to the interior face of demising and exterior walls.