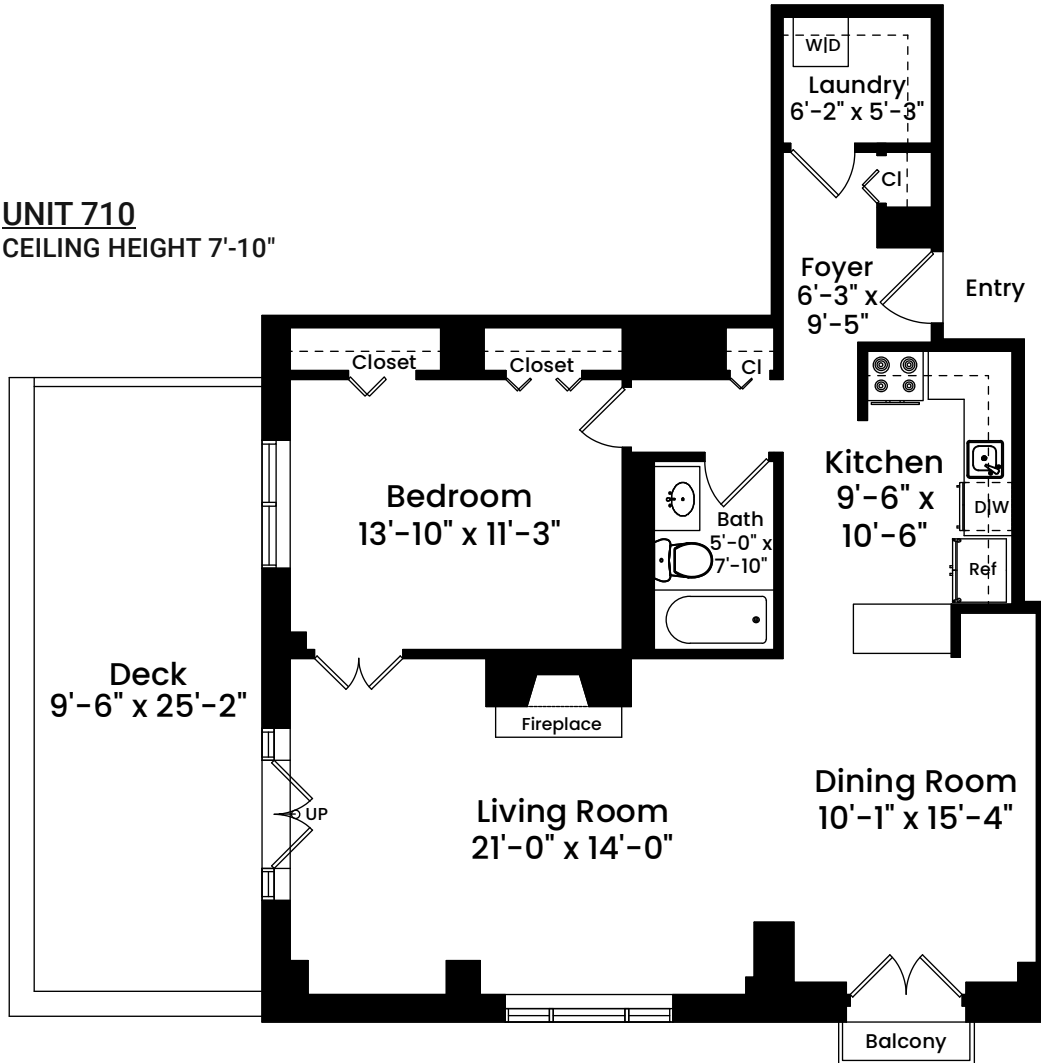
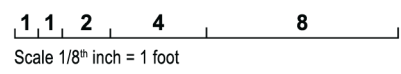


350 North Street, Unit 702 | Boston, MA 02109

UNIT 710
CEILING HEIGHT 7'-10"



AREA CALCULATIONS	
Total Unit Living Area	924 SF
Deck	239 SF
Balcony	10 SF
Total Area	1,173 SF



Architecturally drafted in April 2024 by:
 National Floor Plans (800) 328-0217
 Associate Member | American Institute of Architects
 Contact www.nationalfloorplans.com for .dwg AutoCAD files
 or square footage questions about this property.

Dimensions are not guaranteed and are provided for informational purposes only.
 Individual room dimensions are not used to calculate overall square footage.
 National Floor Plans follows ANSI guidelines for calculating square footage.
 Unit area has been calculated to the interior face of demising and exterior walls.