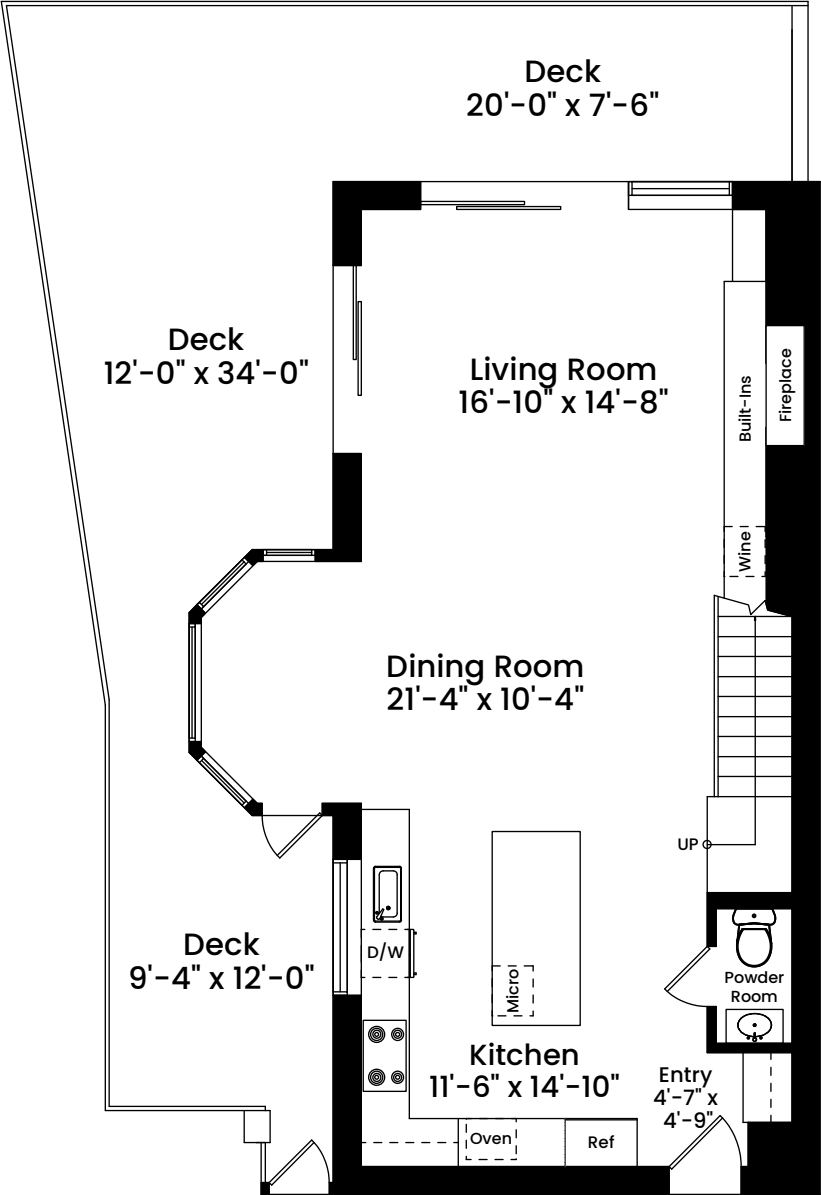
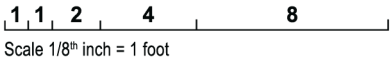


343 Commercial Street, TH21 | Boston, MA 02109

FIRST FLOOR
CEILING HEIGHT 8'-6"



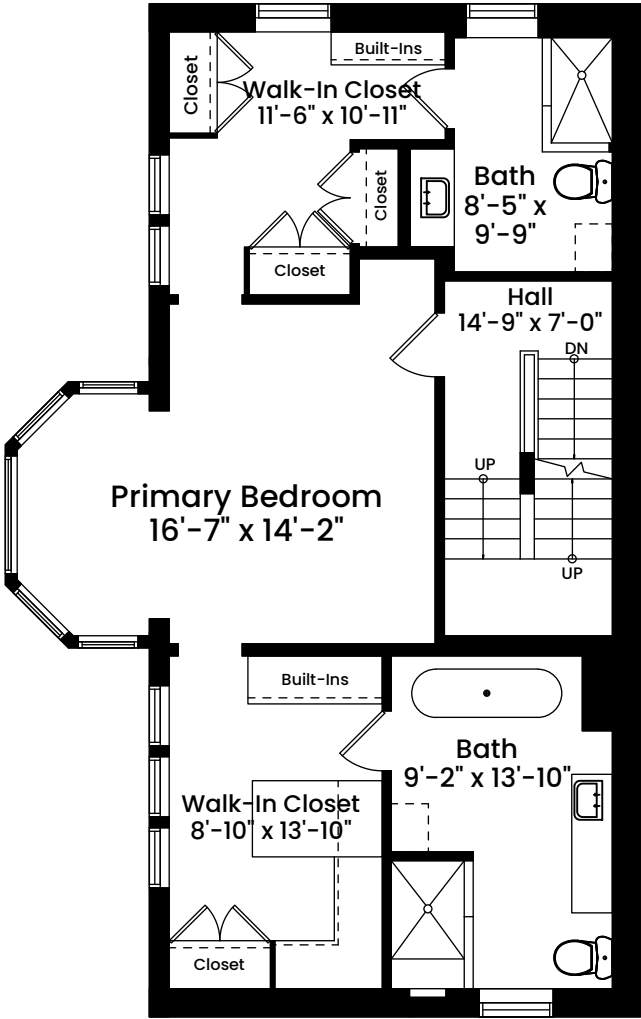
Architecturally drafted in September 2021 by:
National Floor Plans
Associate Member | American Institute of Architects
Contact www.nationalfloorplans.com for .dwg AutoCAD files
or square footage questions about this property.



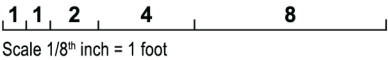
Dimensions are not guaranteed and are provided for informational purposes only.
Individual room dimensions are not used to calculate overall square footage.
National Floor Plans follows ANSI guidelines for calculating square footage.

343 Commercial Street, TH21 | Boston, MA 02109

SECOND FLOOR
CEILING HEIGHT 8'-5"



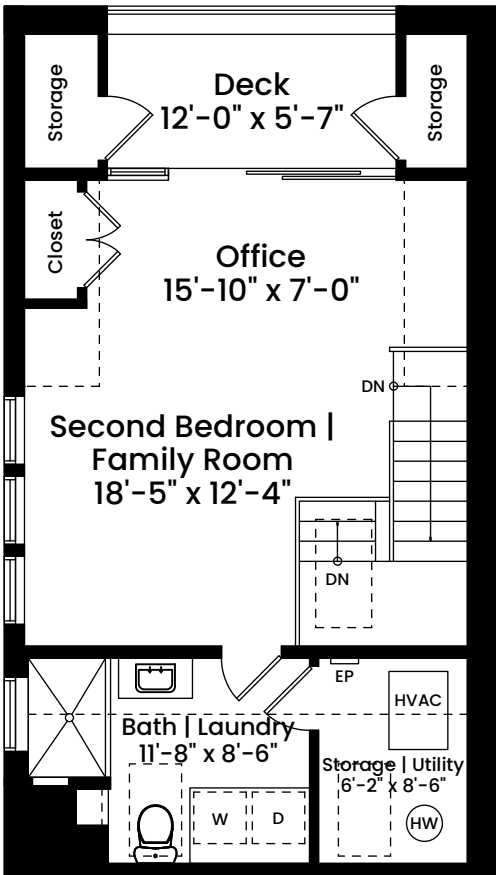
Architecturally drafted in September 2021 by:
National Floor Plans
Associate Member | American Institute of Architects
Contact www.nationalfloorplans.com for .dwg AutoCAD files
or square footage questions about this property.



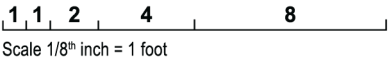
Dimensions are not guaranteed and are provided for informational purposes only.
Individual room dimensions are not used to calculate overall square footage.
National Floor Plans follows ANSI guidelines for calculating square footage.

343 Commercial Street, TH21 | Boston, MA 02109

THIRD FLOOR
CEILING HEIGHT 9'-7"



Architecturally drafted in September 2021 by:
National Floor Plans
Associate Member | American Institute of Architects
Contact www.nationalfloorplans.com for .dwg AutoCAD files
or square footage questions about this property.



Dimensions are not guaranteed and are provided for informational purposes only.
Individual room dimensions are not used to calculate overall square footage.
National Floor Plans follows ANSI guidelines for calculating square footage.