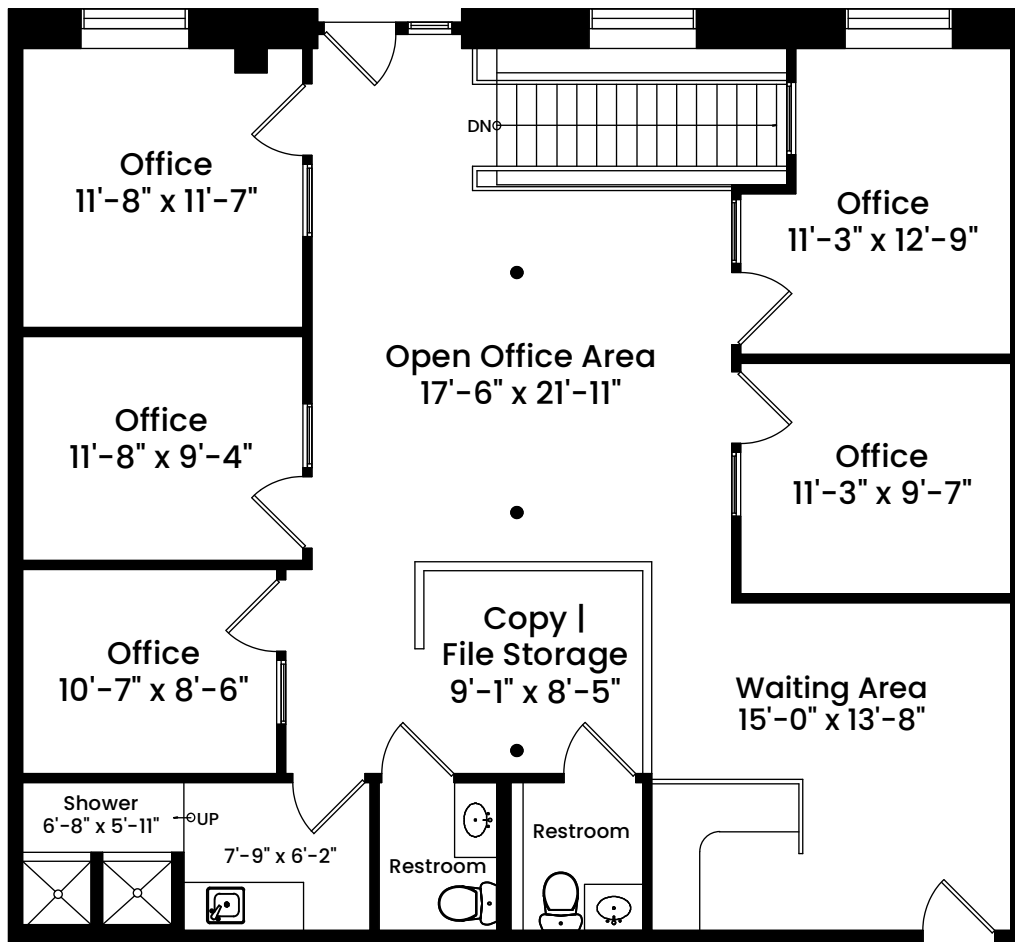


343 Commercial Street, Unit 109 | Boston, MA 02109

FIRST FLOOR CEILING HEIGHT 9'-6"



AREA CALCULATIONS	
Lower Level	1,516 SF
First Floor	1,535 SF
Total Unit Area	3,051 SF

Architecturally drafted in January 2024 by:
 National Floor Plans (800) 328-0217
 Associate Member | American Institute of Architects
 Contact www.nationalfloorplans.com for .dwg AutoCAD files
 or square footage questions about this property.

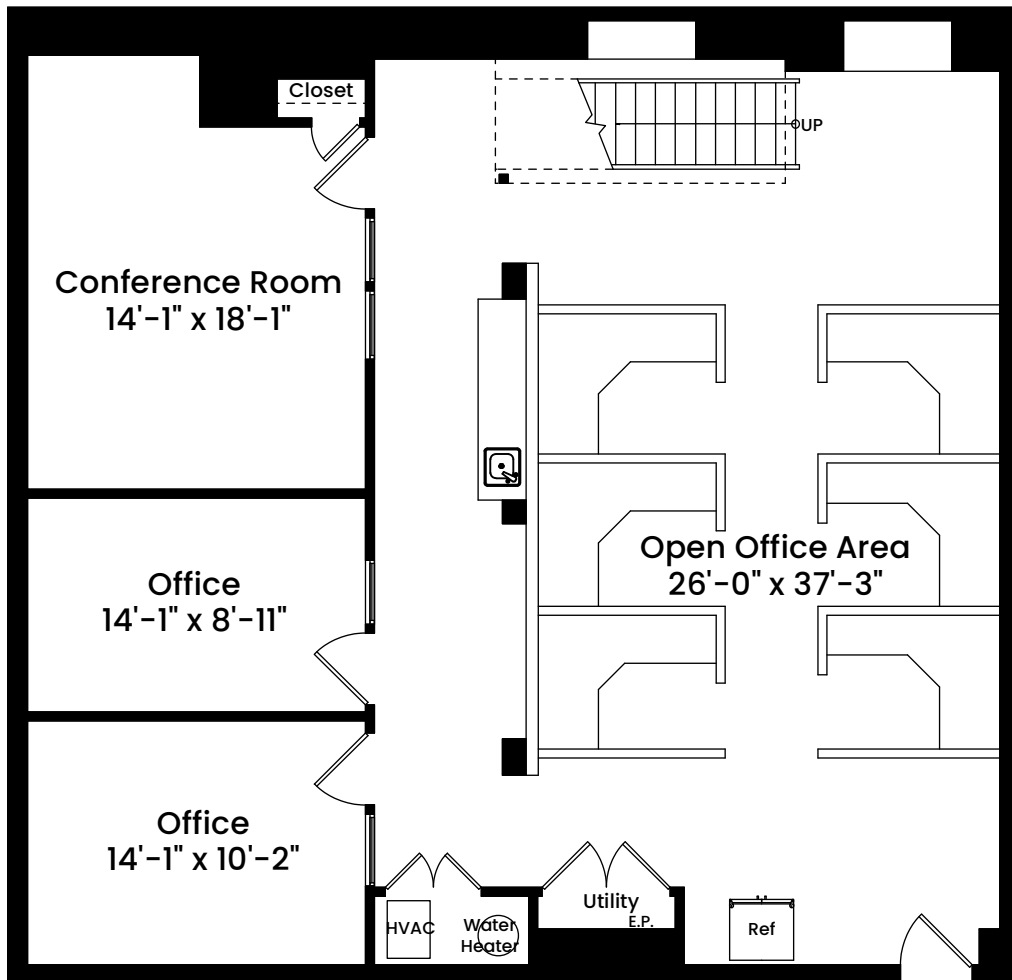


1 1 2 4 8
 Scale 1/8" inch = 1 foot

Dimensions are not guaranteed and are provided for informational purposes only.
 Individual room dimensions are not used to calculate overall square footage.
 National Floor Plans follows ANSI guidelines for calculating square footage.

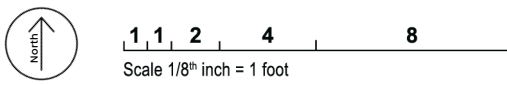
343 Commercial Street, Unit 109 | Boston, MA 02109

LOWER LEVEL
CEILING HEIGHT 7'-2"



AREA CALCULATIONS	
Lower Level	1,516 SF
First Floor	1,535 SF
Total Unit Area	3,051 SF

Architecturally drafted in January 2024 by:
National Floor Plans (800) 328-0217
Associate Member | American Institute of Architects
Contact www.nationalfloorplans.com for .dwg AutoCAD files
or square footage questions about this property.



Dimensions are not guaranteed and are provided for informational purposes only.
Individual room dimensions are not used to calculate overall square footage.
National Floor Plans follows ANSI guidelines for calculating square footage.