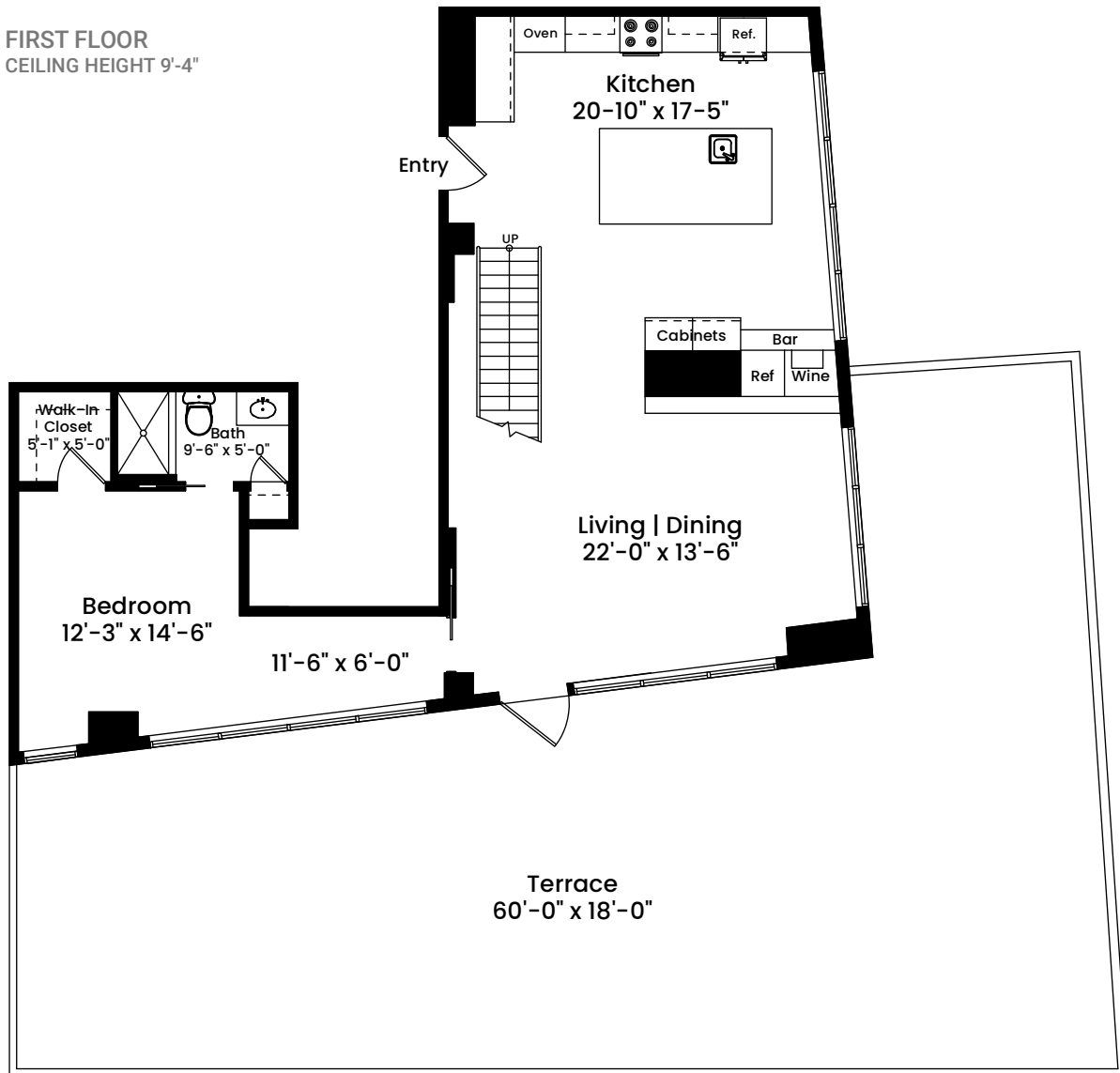


# 234 Causeway Street, Unit 1001 | Boston, MA 02114

FIRST FLOOR  
CEILING HEIGHT 9'-4"



Architecturally drafted in May 2022 by:  
National Floor Plans (800) 328-0217  
Associate Member | American Institute of Architects  
Contact [www.nationalfloorplans.com](http://www.nationalfloorplans.com) for .dwg AutoCAD files  
or square footage questions about this property.

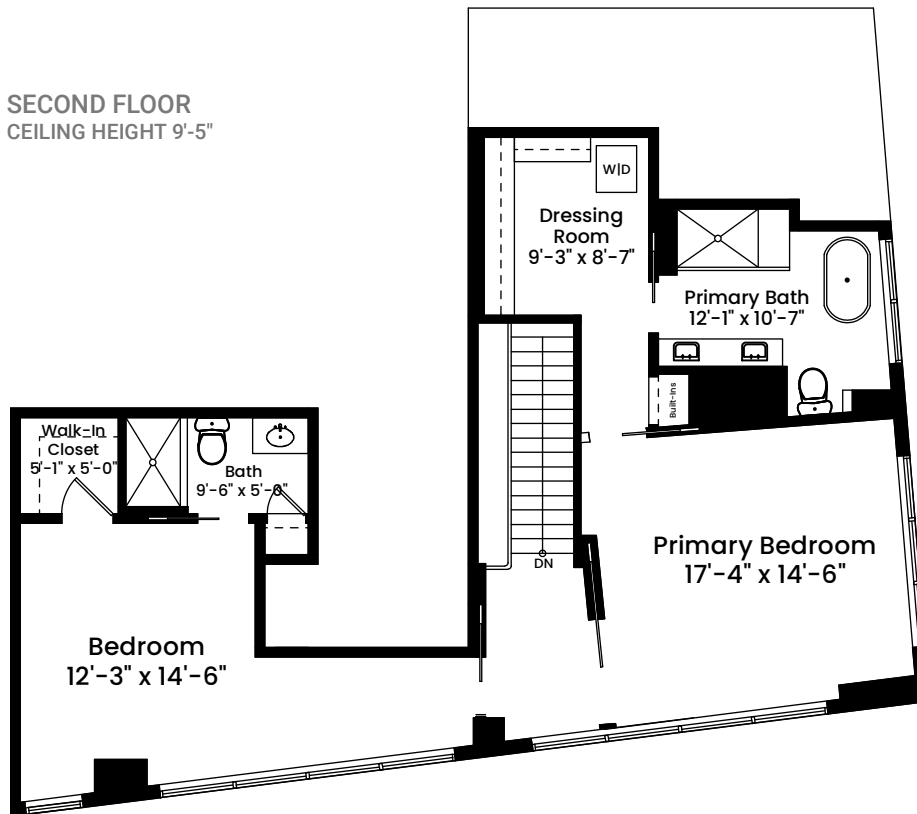


1 1 2 4 8  
Scale 1 inch = 10 feet

Dimensions are not guaranteed and are provided for informational purposes only.  
Individual room dimensions are not used to calculate overall square footage.  
National Floor Plans follows ANSI guidelines for calculating square footage.

## 234 Causeway Street, Unit 1001 | Boston, MA 02114

### SECOND FLOOR CEILING HEIGHT 9'-5"



Architecturally drafted in May 2022 by:  
National Floor Plans (800) 328-0217  
Associate Member | American Institute of Architects  
Contact [www.nationalfloorplans.com](http://www.nationalfloorplans.com) for .dwg AutoCAD files  
or square footage questions about this property.



1 1 2 4 8  
Scale 1 inch = 10 feet

Dimensions are not guaranteed and are provided for informational purposes only.  
Individual room dimensions are not used to calculate overall square footage.  
National Floor Plans follows ANSI guidelines for calculating square footage.