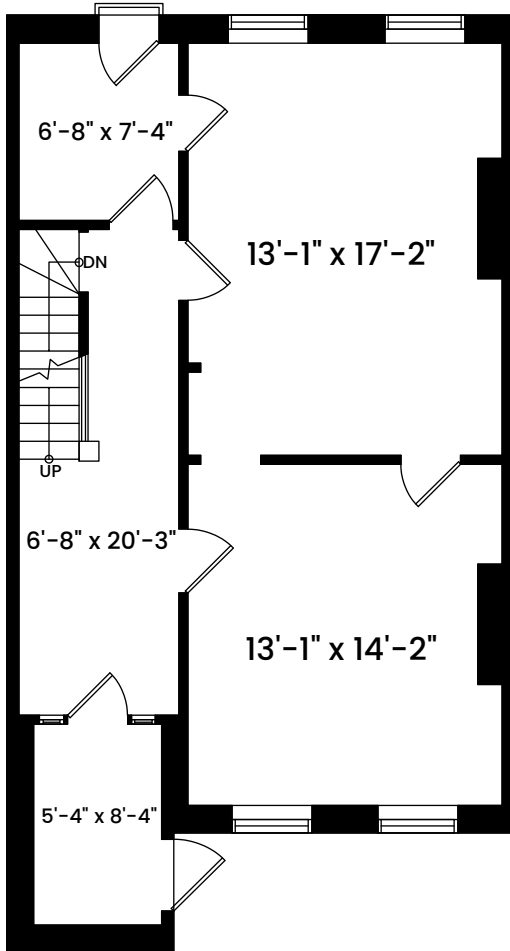


# 20 Milford Street | Boston, MA 02118

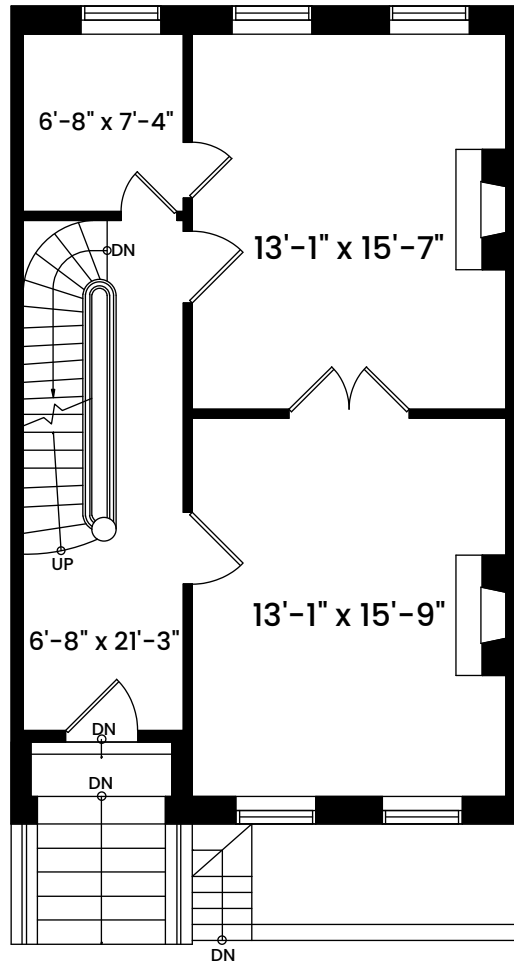
## STREET LEVEL

CEILING HEIGHT 7'-11"



## FIRST FLOOR

CEILING HEIGHT 11'-0"



### AREA CALCULATIONS

|                                  |                 |
|----------------------------------|-----------------|
| Garden Level                     | 750 SF          |
| Street Level                     | 686 SF          |
| Street Level Vestibule           | 63 SF           |
| First Floor                      | 696 SF          |
| Second Floor                     | 715 SF          |
| Third Floor                      | 715 SF          |
| <b>Total Gross Building Area</b> | <b>3,625 SF</b> |

Architecturally drafted in July 2024 by:  
 National Floor Plans (800) 328-0217  
 Associate Member | American Institute of Architects  
 Contact [www.nationalfloorplans.com](http://www.nationalfloorplans.com) for .dwg AutoCAD files  
 or square footage questions about this property.



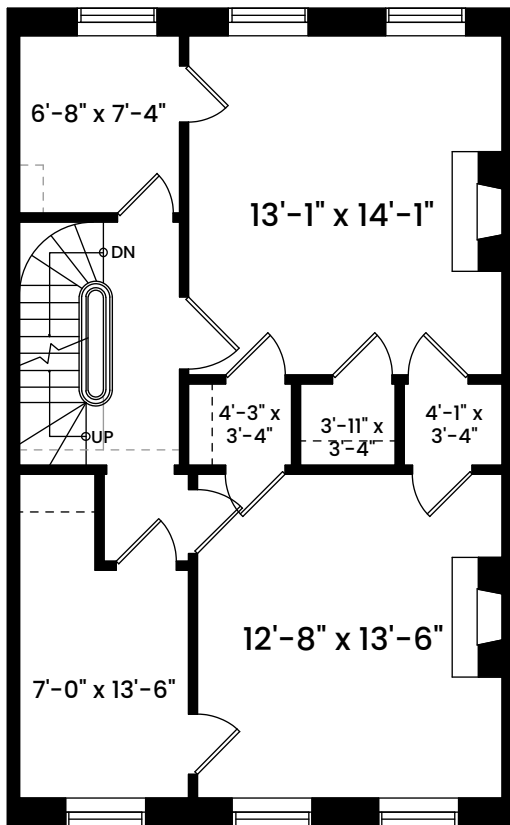
1 1 2 4 8  
 Scale 1/8" inch = 1 foot

Dimensions are not guaranteed and are provided for informational purposes only.  
 Individual room dimensions are not used to calculate overall square footage.  
 National Floor Plans follows ANSI guidelines for calculating square footage.

# 20 Milford Street | Boston, MA 02118

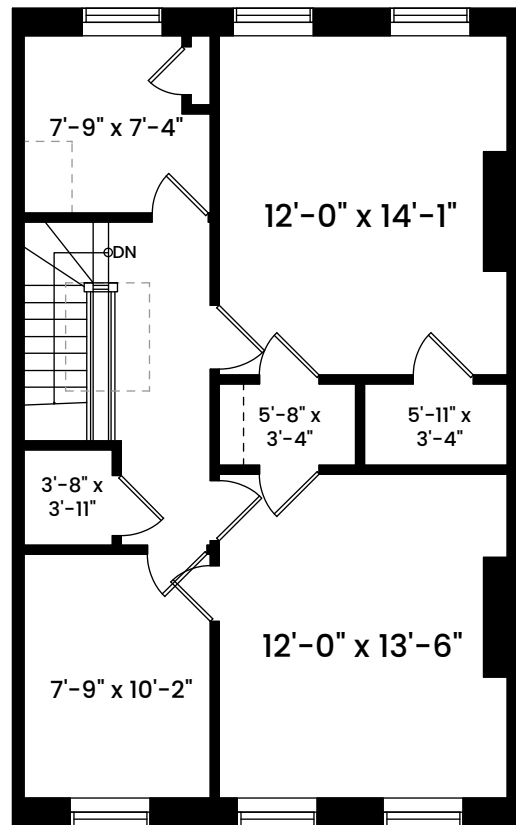
## SECOND FLOOR

CEILING HEIGHT 9'-0"



## THIRD FLOOR

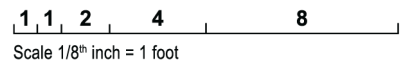
CEILING HEIGHT 8'-3.5"



### AREA CALCULATIONS

|                                  |                 |
|----------------------------------|-----------------|
| Garden Level                     | 750 SF          |
| Street Level                     | 686 SF          |
| Street Level Vestibule           | 63 SF           |
| First Floor                      | 696 SF          |
| Second Floor                     | 715 SF          |
| Third Floor                      | 715 SF          |
| <b>Total Gross Building Area</b> | <b>3,625 SF</b> |

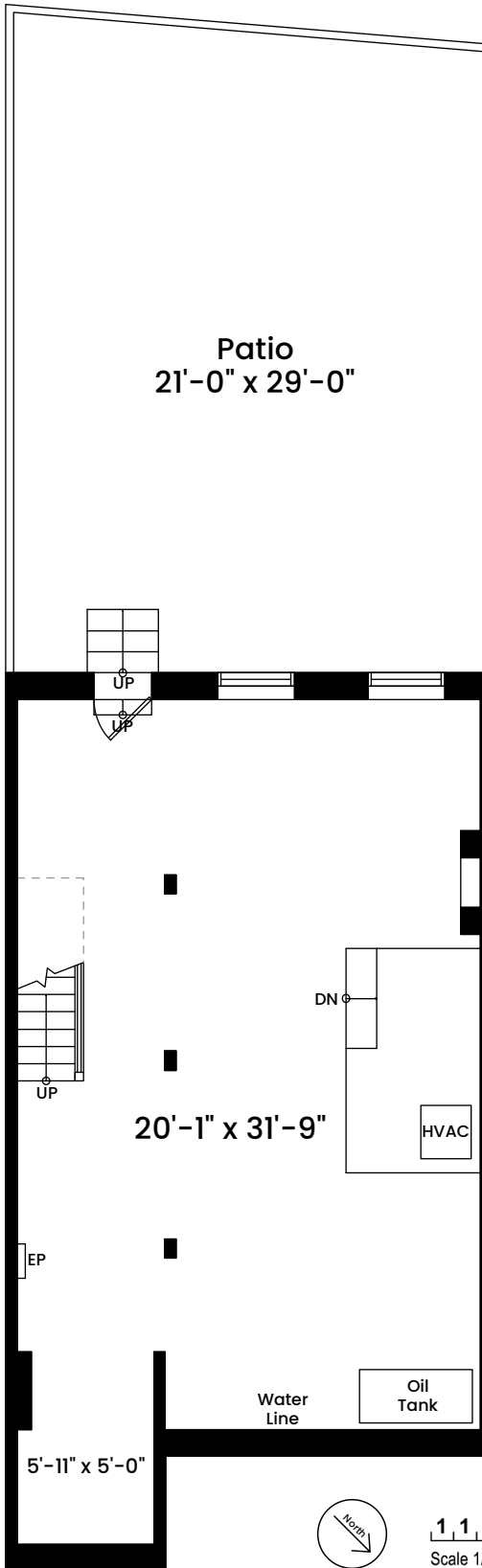
Architecturally drafted in July 2024 by:  
 National Floor Plans (800) 328-0217  
 Associate Member | American Institute of Architects  
 Contact [www.nationalfloorplans.com](http://www.nationalfloorplans.com) for .dwg AutoCAD files  
 or square footage questions about this property.



Dimensions are not guaranteed and are provided for informational purposes only.  
 Individual room dimensions are not used to calculate overall square footage.  
 National Floor Plans follows ANSI guidelines for calculating square footage.

# 20 Milford Street | Boston, MA 02118

**GARDEN LEVEL**  
CEILING HEIGHT 6'-5"



| AREA CALCULATIONS                |                 |
|----------------------------------|-----------------|
| Garden Level                     | 750 SF          |
| Street Level                     | 686 SF          |
| Street Level Vestibule           | 63 SF           |
| First Floor                      | 696 SF          |
| Second Floor                     | 715 SF          |
| Third Floor                      | 715 SF          |
| <b>Total Gross Building Area</b> | <b>3,625 SF</b> |

Architecturally drafted in July 2024 by:  
National Floor Plans (800) 328-0217  
Associate Member | American Institute of Architects  
Contact [www.nationalfloorplans.com](http://www.nationalfloorplans.com) for .dwg AutoCAD files  
or square footage questions about this property.

Dimensions are not guaranteed and are provided for informational purposes only.  
Individual room dimensions are not used to calculate overall square footage.  
National Floor Plans follows ANSI guidelines for calculating square footage.