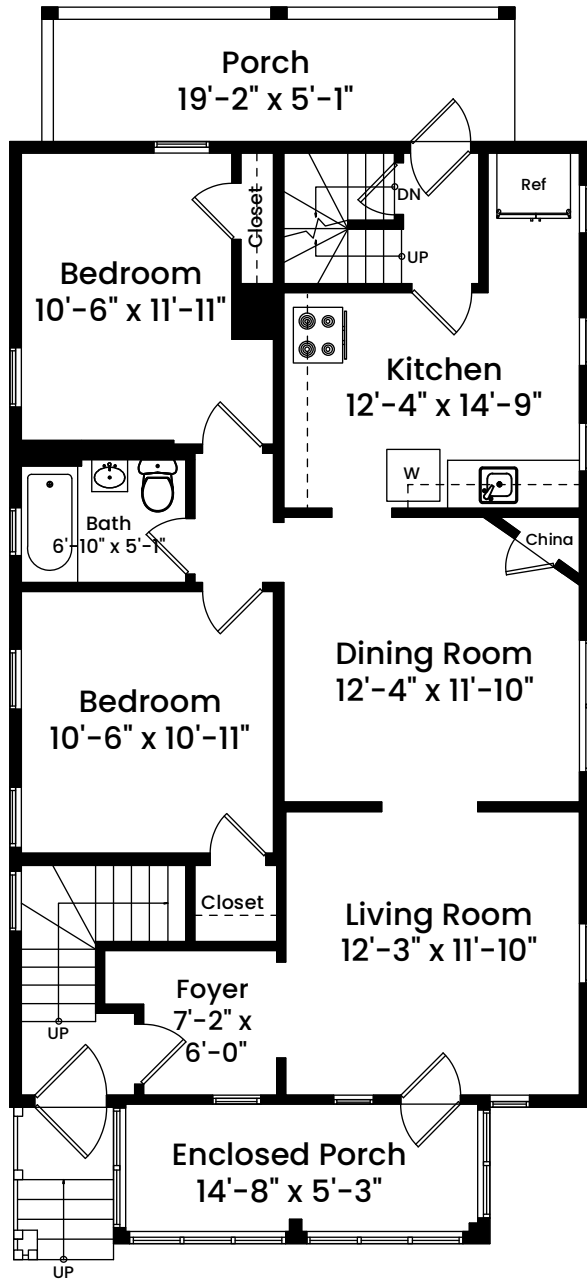
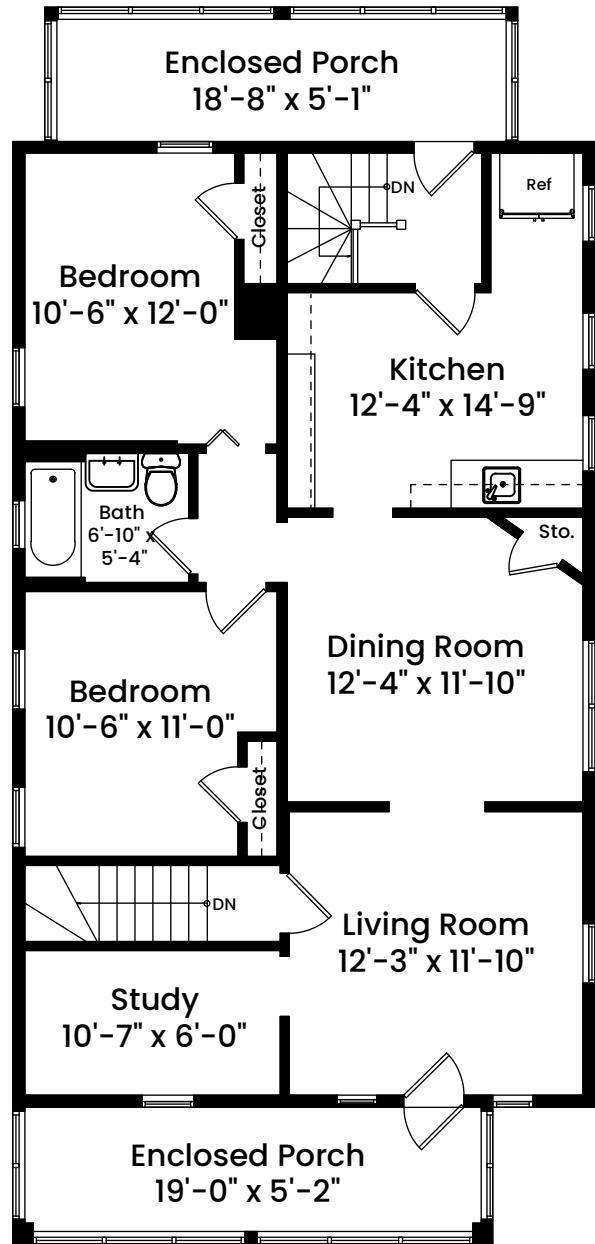


17 Cannell Place | Everett, MA 02149

FIRST FLOOR CEILING HEIGHT 8'-3"



SECOND FLOOR CEILING HEIGHT 8'-4"



Architecturally drafted in March 2021 by:
National Floor Plans
Associate Member | American Institute of Architects
Contact www.nationalfloorplans.com for .dwg AutoCAD files
or square footage questions about this property.

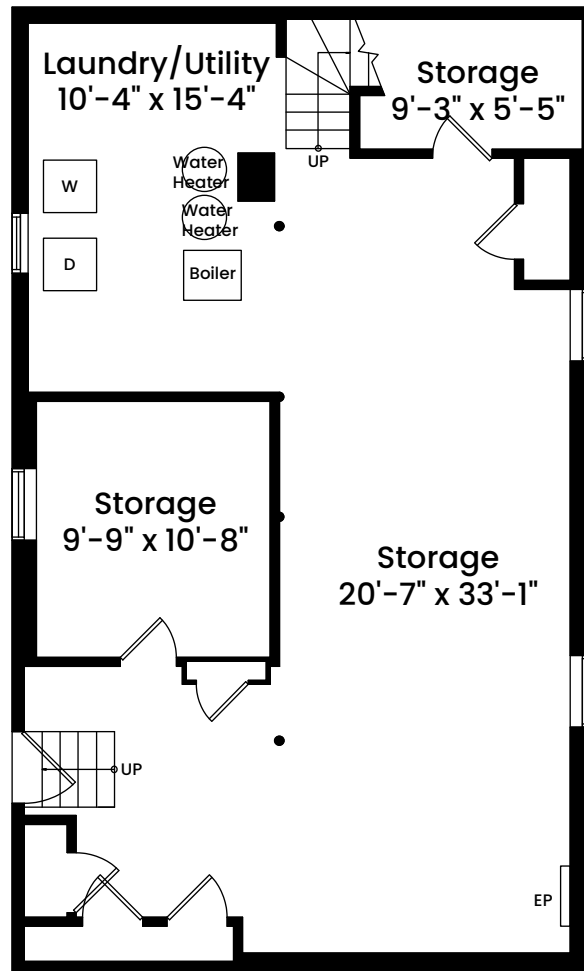


1 1 2 4 8
Scale 1/8" inch = 1 foot

Dimensions are not guaranteed and are provided for informational purposes only.
Individual room dimensions are not used to calculate overall square footage.

17 Cannell Place | Everett, MA 02149

BASEMENT CEILING HEIGHT 6'-11"



Architecturally drafted in March 2021 by:
National Floor Plans
Associate Member | American Institute of Architects
Contact www.nationalfloorplans.com for .dwg AutoCAD files
or square footage questions about this property.



1 1 2 4 8
Scale 1/8" = 1 foot

Dimensions are not guaranteed and are provided for informational purposes only.
Individual room dimensions are not used to calculate overall square footage.