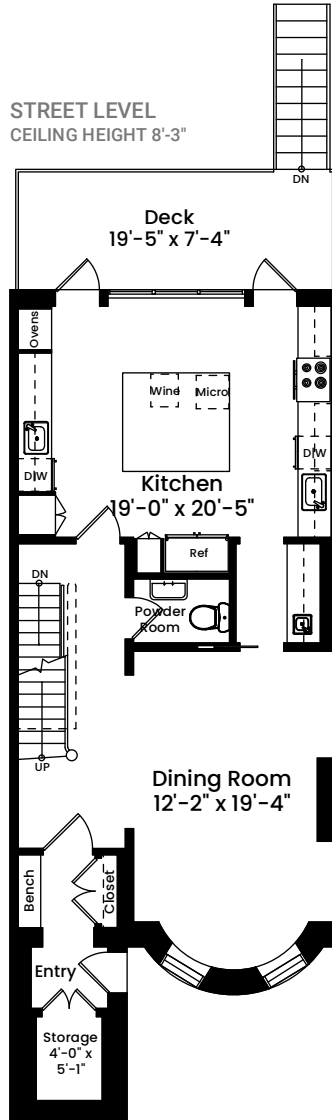
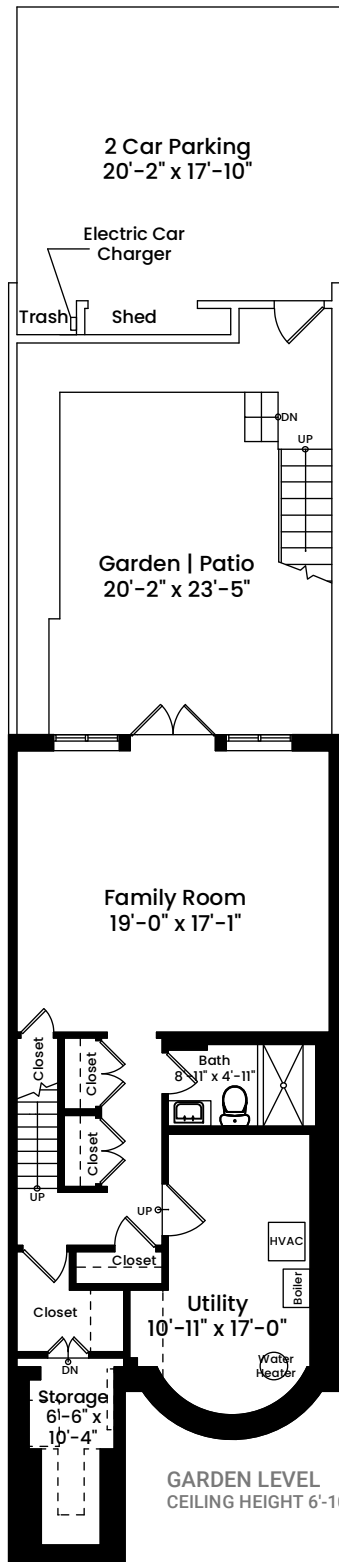
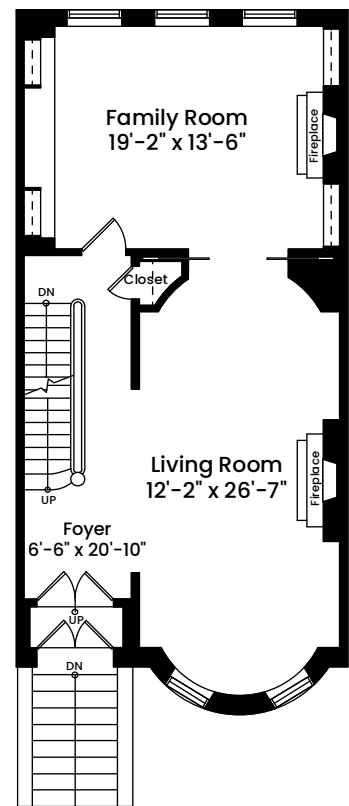


# 165 West Brookline Street | Boston, MA 02118

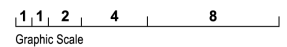


**FIRST FLOOR**  
CEILING HEIGHT 10'-9"



**Area Calculations**

Garden Level	608 SF
Street Level	809 SF
First Floor	820 SF
Second Floor	820 SF
Third Floor	817 SF
<b>Total Gross Living Area</b>	<b>3,874 SF</b>
Garden Level Utility	286 SF
<b>Total Gross Building Area</b>	<b>4,160 SF</b>

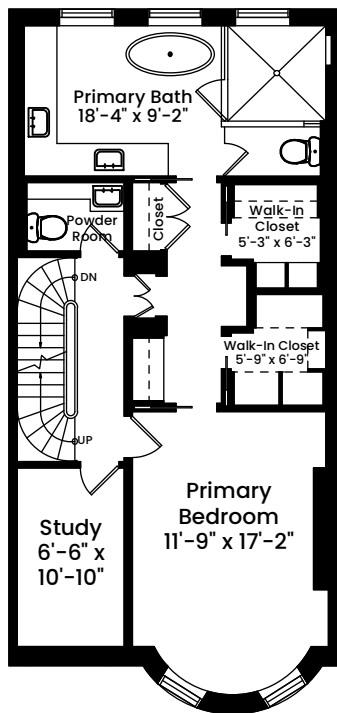


Architecturally drafted in July 2023 by:  
National Floor Plans (800) 328-0217  
Associate Member | American Institute of Architects  
Contact [www.nationalfloorplans.com](http://www.nationalfloorplans.com) for .dwg AutoCAD files  
or square footage questions about this property.

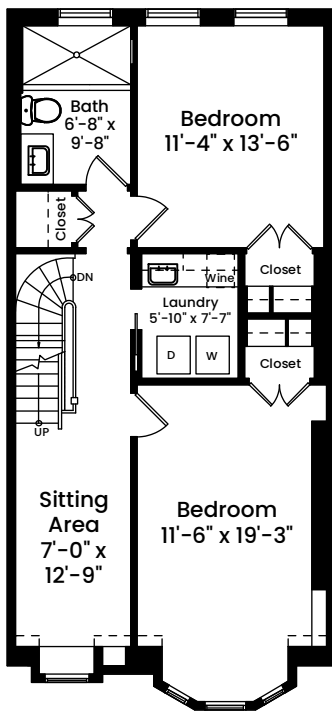
Dimensions are not guaranteed and are provided for informational purposes only.  
Individual room dimensions are not used to calculate overall square footage.  
National Floor Plans follows ANSI guidelines for calculating square footage.

# 165 West Brookline Street | Boston, MA 02118

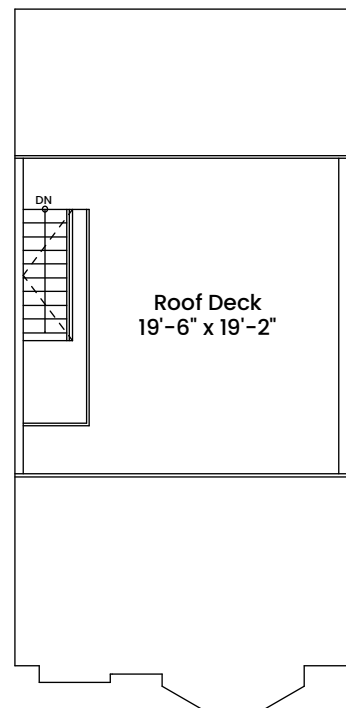
**SECOND FLOOR**  
CEILING HEIGHT 9'-10"



**THIRD FLOOR**  
CEILING HEIGHT 8'-11"



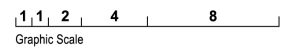
**ROOF**



Area Calculations

Garden Level	608 SF
Street Level	809 SF
First Floor	820 SF
Second Floor	820 SF
Third Floor	817 SF
Total Gross Living Area	3,874 SF
Garden Level Utility	286 SF
Total Gross Building Area	4,160 SF

Architecturally drafted in July 2023 by:  
National Floor Plans (800) 328-0217  
Associate Member | American Institute of Architects  
Contact [www.nationalfloorplans.com](http://www.nationalfloorplans.com) for .dwg AutoCAD files  
or square footage questions about this property.



Dimensions are not guaranteed and are provided for informational purposes only.  
Individual room dimensions are not used to calculate overall square footage.  
National Floor Plans follows ANSI guidelines for calculating square footage.