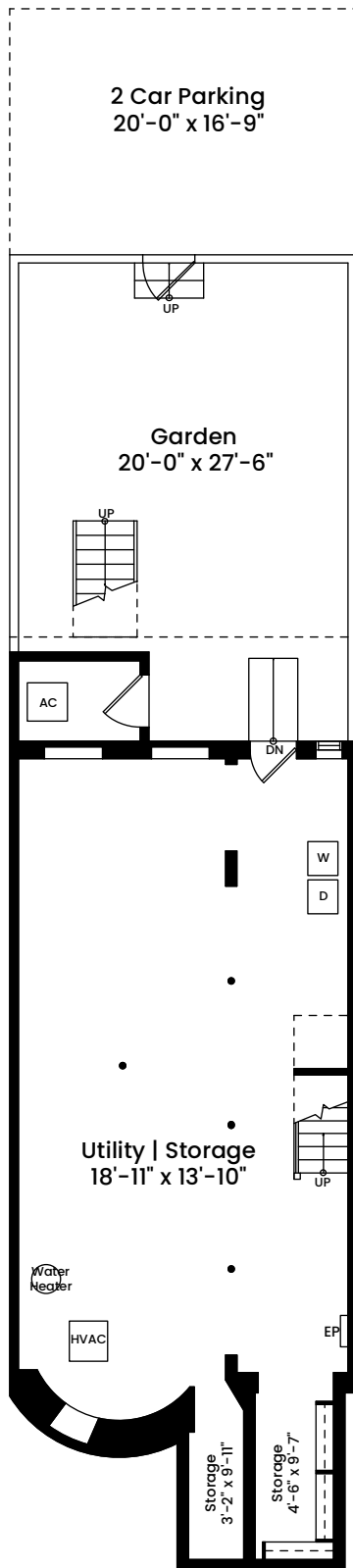
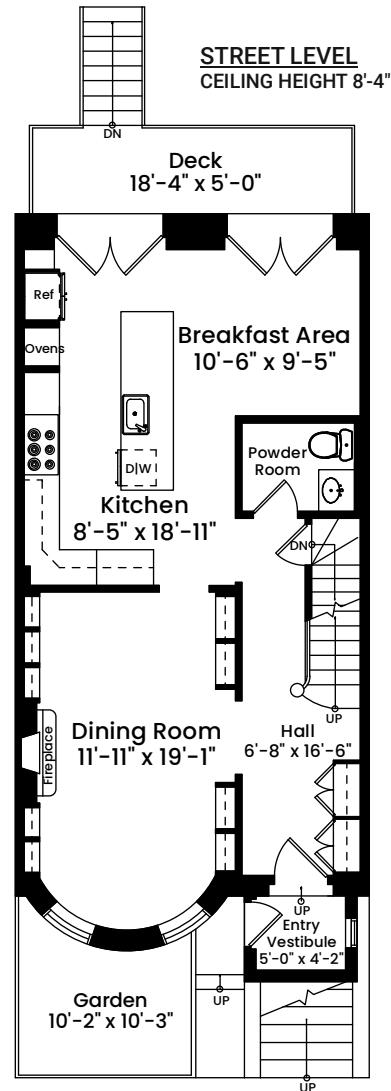


# 160 West Newton Street | Boston, MA 02118



**GARDEN LEVEL**  
CEILING HEIGHT 6'-9"



## AREA CALCULATIONS

Street Level	792 SF
Parlor Level	806 SF
Second Floor	806 SF
Third Floor	768 SF
Total Gross Living Area	3,172 SF
Garden Level	874 SF
Third Floor Area Below 5'	20 SF
Total Gross Building Area	4,066 SF



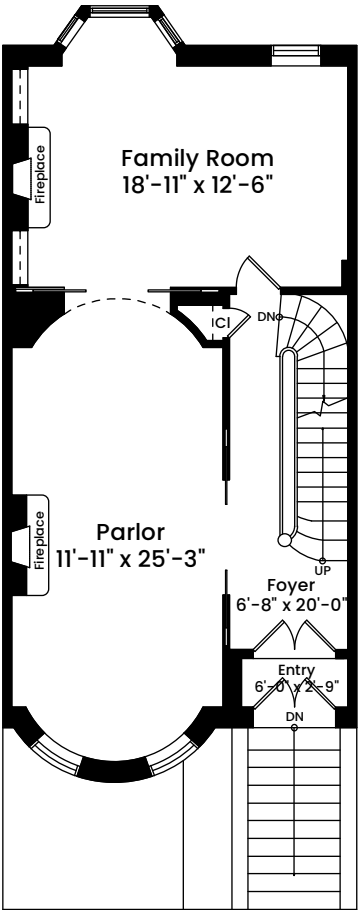
1 1 2 4 8  
Graphic Scale

Architecturally drafted in February 2024 by:  
National Floor Plans (800) 328-0217  
Associate Member | American Institute of Architects  
Contact [www.nationalfloorplans.com](http://www.nationalfloorplans.com) for .dwg AutoCAD files  
or square footage questions about this property.

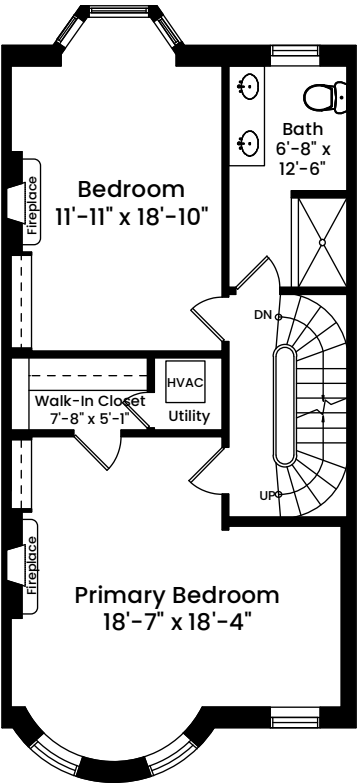
Dimensions are not guaranteed and are provided for informational purposes only.  
Individual room dimensions are not used to calculate overall square footage.  
National Floor Plans follows ANSI guidelines for calculating square footage.

# 160 West Newton Street | Boston, MA 02118

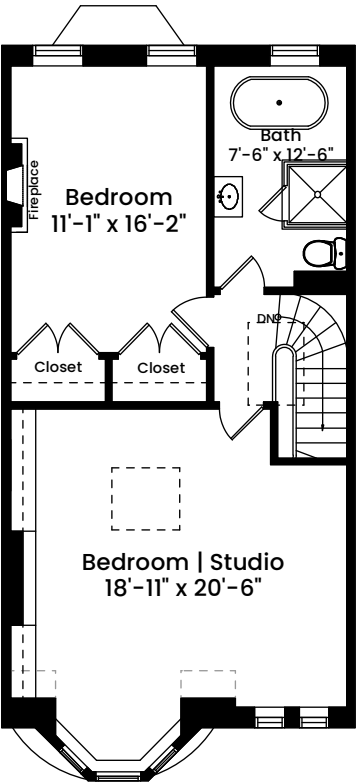
**PARLOR LEVEL**  
CEILING HEIGHT 10'-7"



**SECOND FLOOR**  
CEILING HEIGHT 9'-4"

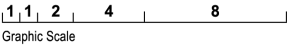


**THIRD FLOOR**  
CEILING HEIGHT 9'-2"



AREA CALCULATIONS	
Street Level	792 SF
Parlor Level	806 SF
Second Floor	806 SF
Third Floor	768 SF
Total Gross Living Area	3,172 SF
Garden Level	874 SF
Third Floor Area Below 5'	20 SF
Total Gross Building Area	4,066 SF

Architecturally drafted in February 2024 by:  
National Floor Plans (800) 328-0217  
Associate Member | American Institute of Architects  
Contact [www.nationalfloorplans.com](http://www.nationalfloorplans.com) for .dwg AutoCAD files  
or square footage questions about this property.



Dimensions are not guaranteed and are provided for informational purposes only.  
Individual room dimensions are not used to calculate overall square footage.  
National Floor Plans follows ANSI guidelines for calculating square footage.