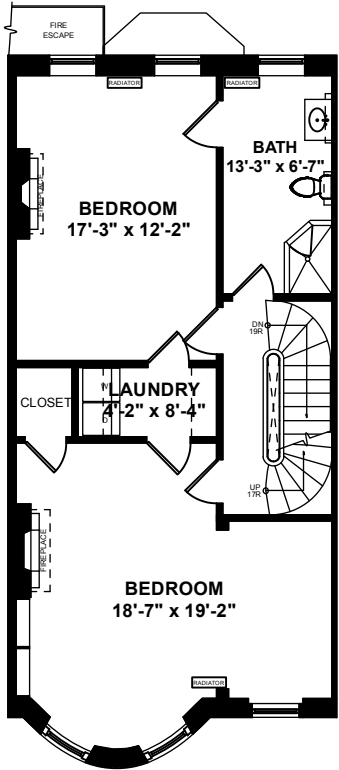


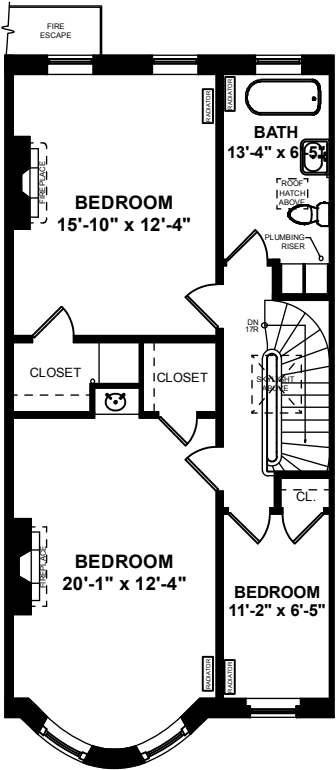


# 14 Claremont Park | Boston, MA 02118

## SECOND FLOOR CEILING HEIGHT 10'-0"



## THIRD FLOOR CEILING HEIGHT 9'-0"



AREA CALCULATIONS	
Garden Level	765 SF
Street Level	1,088 SF
First Floor	845 SF
Second Floor	827 SF
Third Floor	827 SF
Total Gross Living Area	4,352 SF
Garden Level Utility	437 SF
Street Level Vestibule	38 SF
Total Gross Building Area	4,827 SF

Architecturally drafted in October 2023 by:  
National Floor Plans (800) 328-0217  
Associate Member | American Institute of Architects  
Contact [www.nationalfloorplans.com](http://www.nationalfloorplans.com) for .dwg AutoCAD files  
or square footage questions about this property.



Dimensions are not guaranteed and are provided for informational purposes only.  
Individual room dimensions are not used to calculate overall square footage.  
National Floor Plans follows ANSI guidelines for calculating square footage.