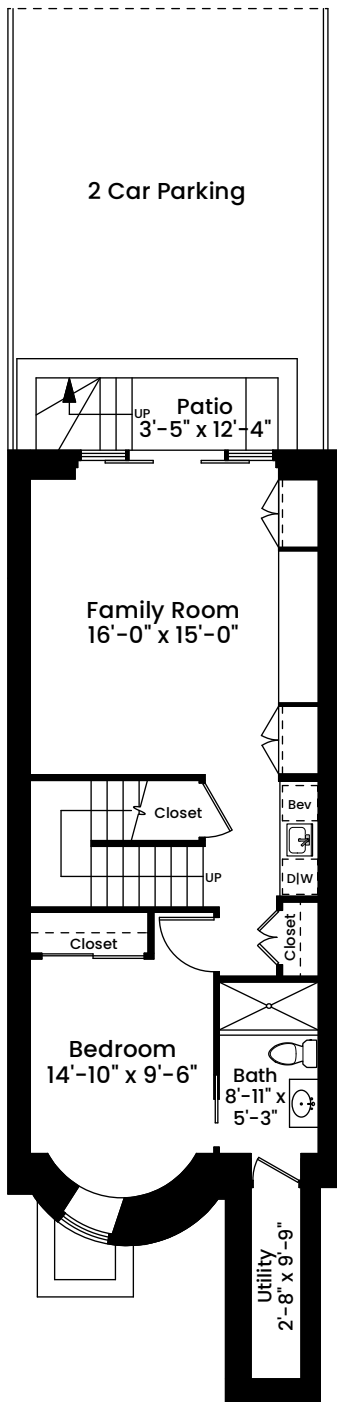
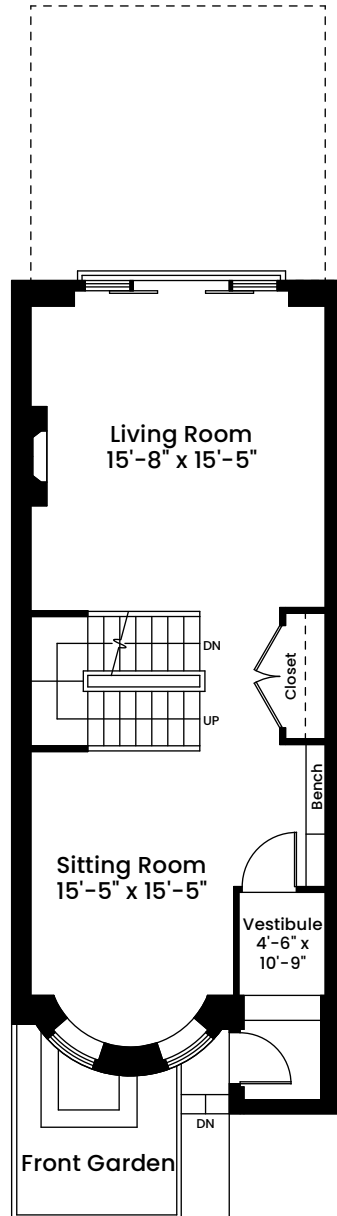


# 149 West Newton Street | Boston, MA 02118

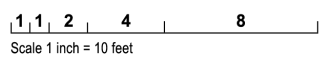
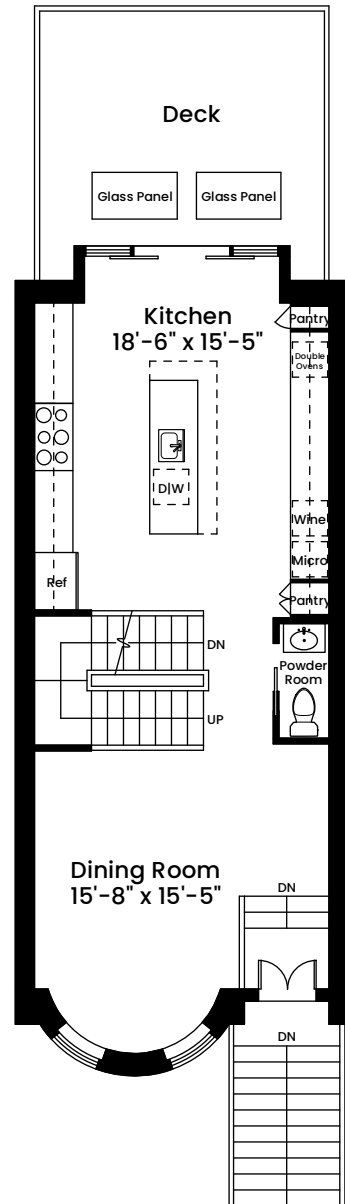
## GARDEN LEVEL CEILING HEIGHT 8'-3"



## STREET LEVEL CEILING HEIGHT 8'-8"



## PARLOR FLOOR CEILING HEIGHT 9'-10"



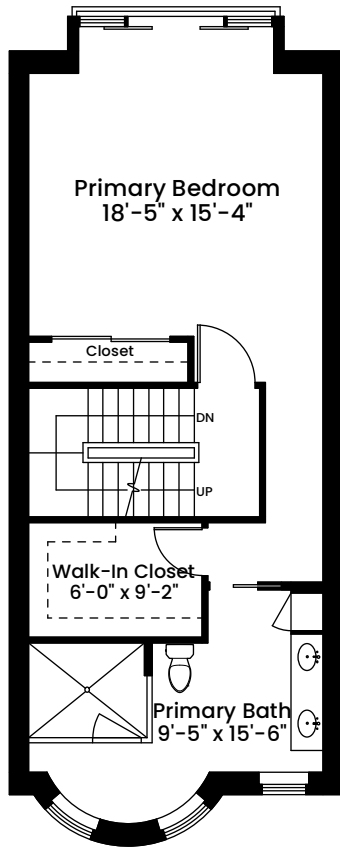
AREA CALCULATIONS	
Garden Level	667 SF
Street Level	704 SF
Parlor Level	691 SF
Second Floor	697 SF
Third Floor	667 SF
<b>Total Gross Living Area</b>	<b>3,426 SF</b>
<hr/>	
Garden Level Utility	71 SF
<b>Total Gross Building Area</b>	<b>3,497 SF</b>

Architecturally drafted in November 2022 by:  
 National Floor Plans (800) 328-0217  
 Associate Member | American Institute of Architects  
 Contact [www.nationalfloorplans.com](http://www.nationalfloorplans.com) for .dwg AutoCAD files  
 or square footage questions about this property.

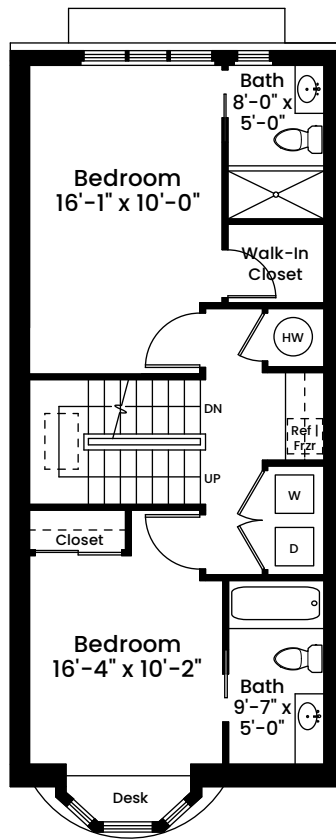
Dimensions are not guaranteed and are provided for informational purposes only.  
 Individual room dimensions are not used to calculate overall square footage.  
 National Floor Plans follows ANSI guidelines for calculating square footage.

# 149 West Newton Street | Boston, MA 02118

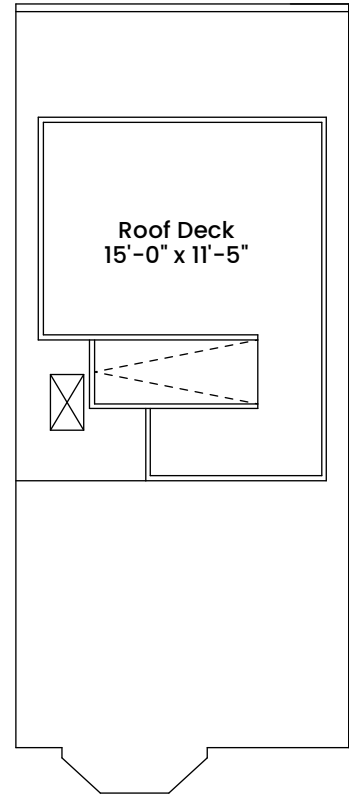
## SECOND FLOOR CEILING HEIGHT 8'-7"



## THIRD FLOOR CEILING HEIGHT 8'-7"



## ROOF



1 1 2 4 8  
Scale 1 inch = 10 feet

Architecturally drafted in November 2022 by:  
National Floor Plans (800) 328-0217  
Associate Member | American Institute of Architects  
Contact [www.nationalfloorplans.com](http://www.nationalfloorplans.com) for .dwg AutoCAD files  
or square footage questions about this property.

### AREA CALCULATIONS

Garden Level	667 SF
Street Level	704 SF
Parlor Level	691 SF
Second Floor	697 SF
Third Floor	667 SF
<b>Total Gross Living Area</b>	<b>3,426 SF</b>

Garden Level Utility	71 SF
<b>Total Gross Building Area</b>	<b>3,497 SF</b>

Dimensions are not guaranteed and are provided for informational purposes only.  
Individual room dimensions are not used to calculate overall square footage.  
National Floor Plans follows ANSI guidelines for calculating square footage.