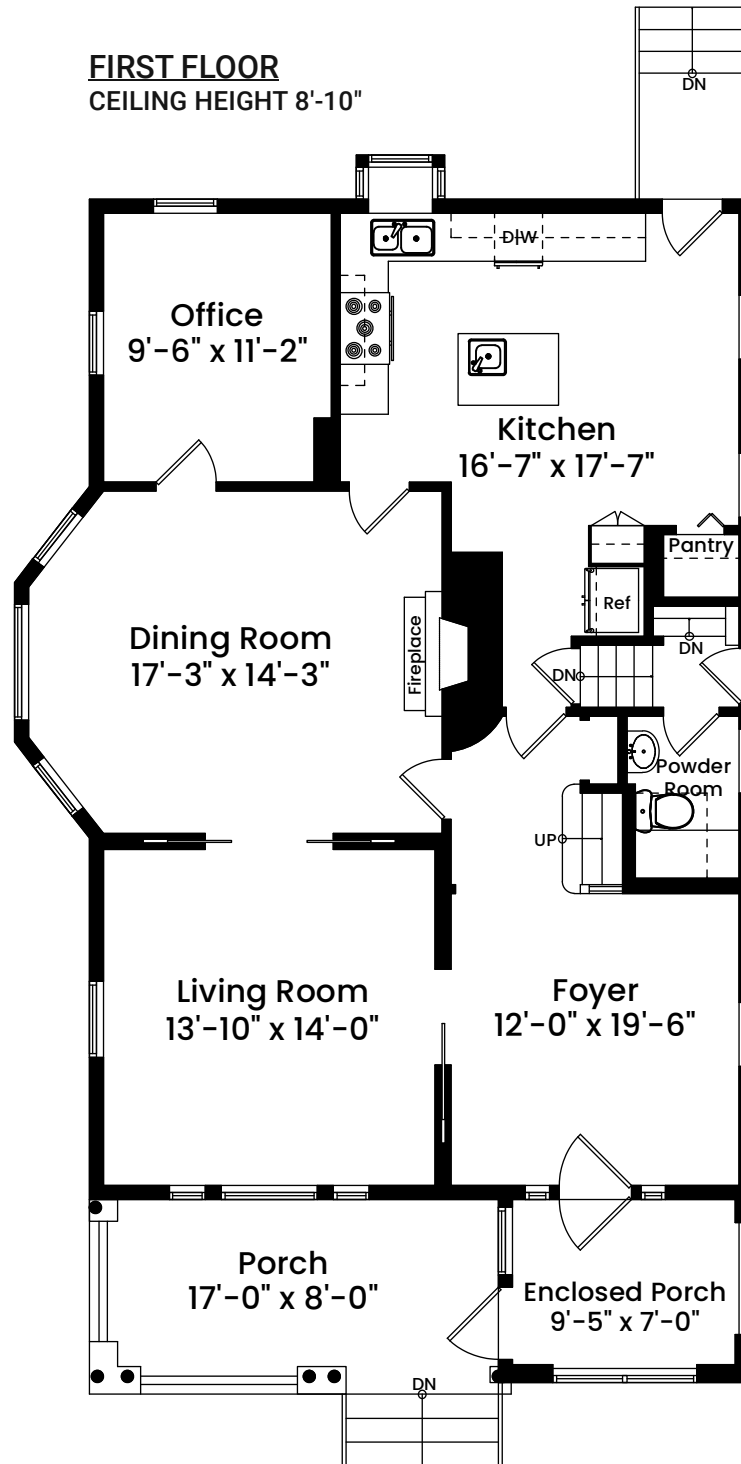


# 12 Summer Street | Waltham, MA 02452

## FIRST FLOOR CEILING HEIGHT 8'-10"



Architecturally drafted in March 2024 by:  
National Floor Plans (800) 328-0217  
Associate Member | American Institute of Architects  
Contact [www.nationalfloorplans.com](http://www.nationalfloorplans.com) for .dwg AutoCAD files  
or square footage questions about this property.

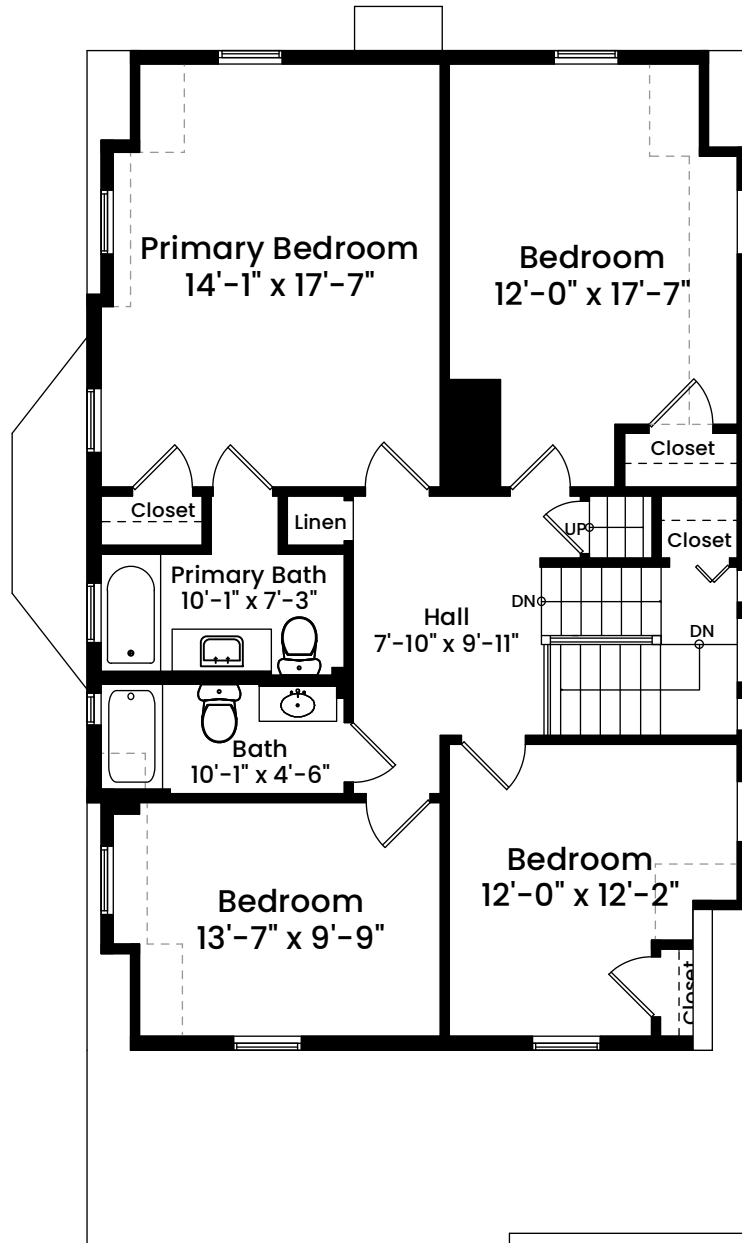


1 1 2 4 8  
Scale 1/8" inch = 1 foot

Dimensions are not guaranteed and are provided for informational purposes only.  
Individual room dimensions are not used to calculate overall square footage.  
National Floor Plans follows ANSI guidelines for calculating square footage.

# 12 Summer Street | Waltham, MA 02452

## SECOND FLOOR CEILING HEIGHT 8'-5"



Architecturally drafted in March 2024 by:  
National Floor Plans (800) 328-0217  
Associate Member | American Institute of Architects  
Contact [www.nationalfloorplans.com](http://www.nationalfloorplans.com) for .dwg AutoCAD files  
or square footage questions about this property.

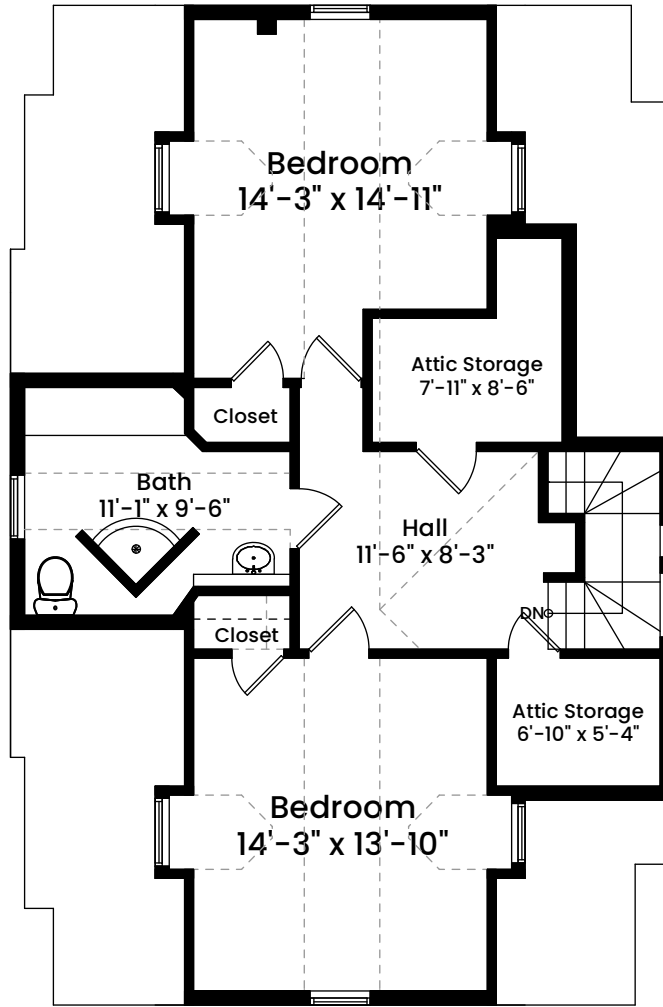


1 1 2 4 8  
Scale 1/8" = 1 foot

Dimensions are not guaranteed and are provided for informational purposes only.  
Individual room dimensions are not used to calculate overall square footage.  
National Floor Plans follows ANSI guidelines for calculating square footage.

# 12 Summer Street | Waltham, MA 02452

## THIRD FLOOR CEILING HEIGHT 7'-3"



Architecturally drafted in March 2024 by:  
National Floor Plans (800) 328-0217  
Associate Member | American Institute of Architects  
Contact [www.nationalfloorplans.com](http://www.nationalfloorplans.com) for .dwg AutoCAD files  
or square footage questions about this property.

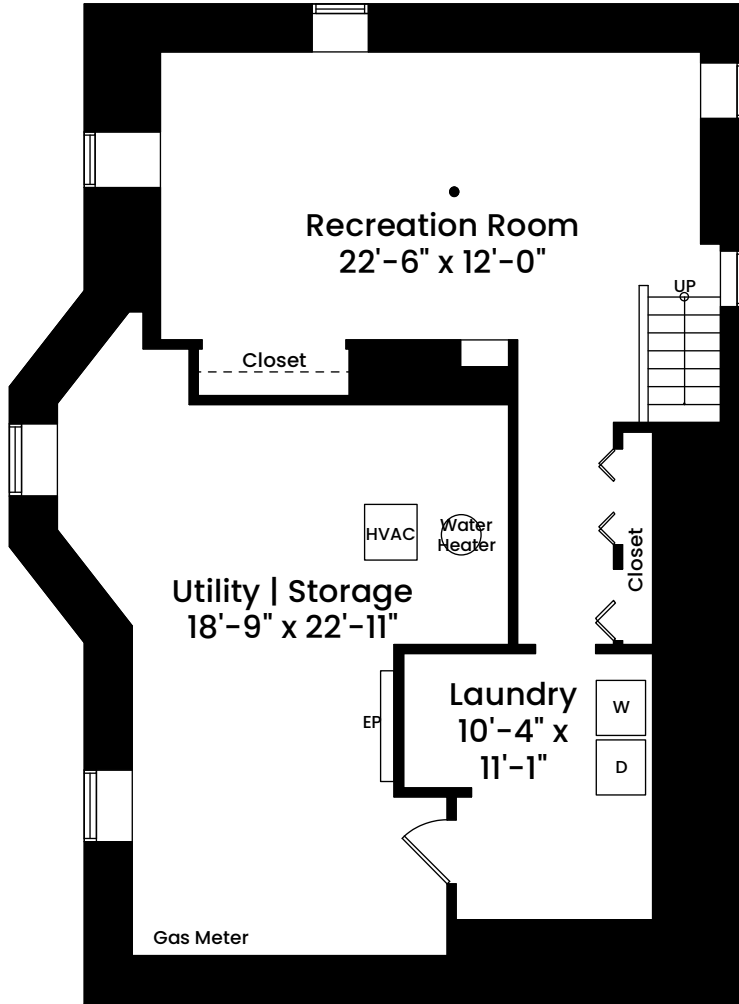


1 1 2 4 8  
Scale 1/8" inch = 1 foot

Dimensions are not guaranteed and are provided for informational purposes only.  
Individual room dimensions are not used to calculate overall square footage.  
National Floor Plans follows ANSI guidelines for calculating square footage.

# 12 Summer Street | Waltham, MA 02452

**LOWER LEVEL**  
CEILING HEIGHT 7'-6"



Architecturally drafted in March 2024 by:  
National Floor Plans (800) 328-0217  
Associate Member | American Institute of Architects  
Contact [www.nationalfloorplans.com](http://www.nationalfloorplans.com) for .dwg AutoCAD files  
or square footage questions about this property.



1 1 2 4 8  
Scale 1/8" inch = 1 foot

Dimensions are not guaranteed and are provided for informational purposes only.  
Individual room dimensions are not used to calculate overall square footage.  
National Floor Plans follows ANSI guidelines for calculating square footage.