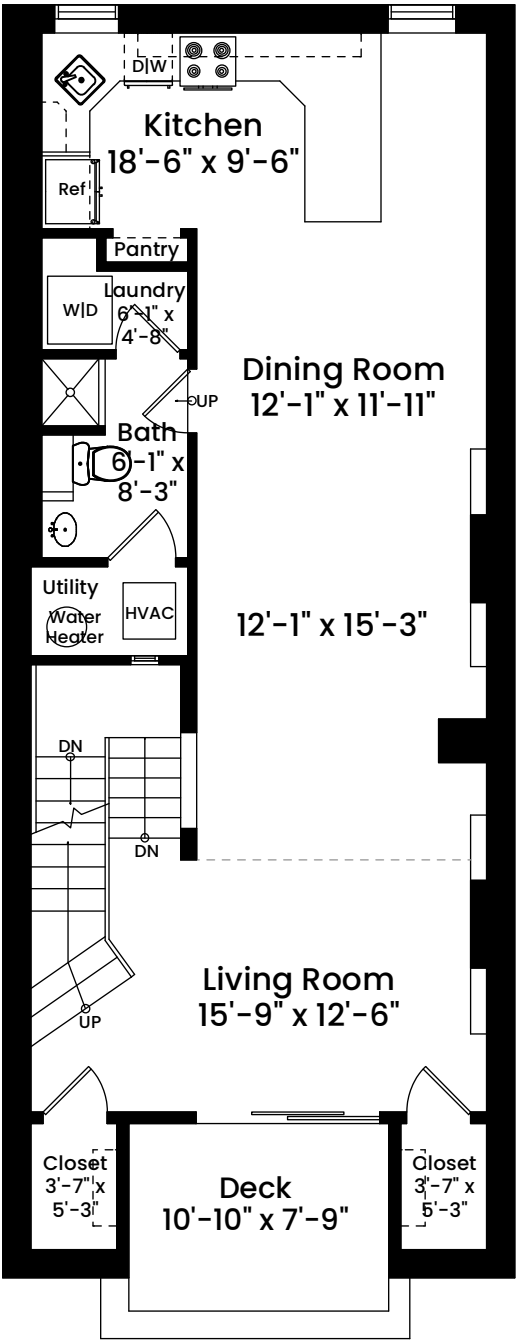
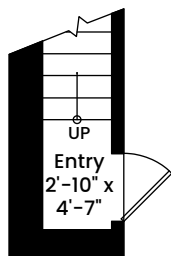


110 Commercial Street, Unit 6 | Boston, MA 02109

FIRST FLOOR
CEILING HEIGHT 8'-6"

ENTRY LEVEL
CEILING HEIGHT 7'-1"



AREA CALCULATIONS	
Entry Level	24 SF
Second Floor	885 SF
Third Floor	641 SF
Total Unit Living Area	1,550 SF
Deck	84 SF
Total Area	1,634 SF

Architecturally drafted in February 2024 by:
National Floor Plans (800) 328-0217
Associate Member | American Institute of Architects
Contact www.nationalfloorplans.com for .dwg AutoCAD files
or square footage questions about this property.

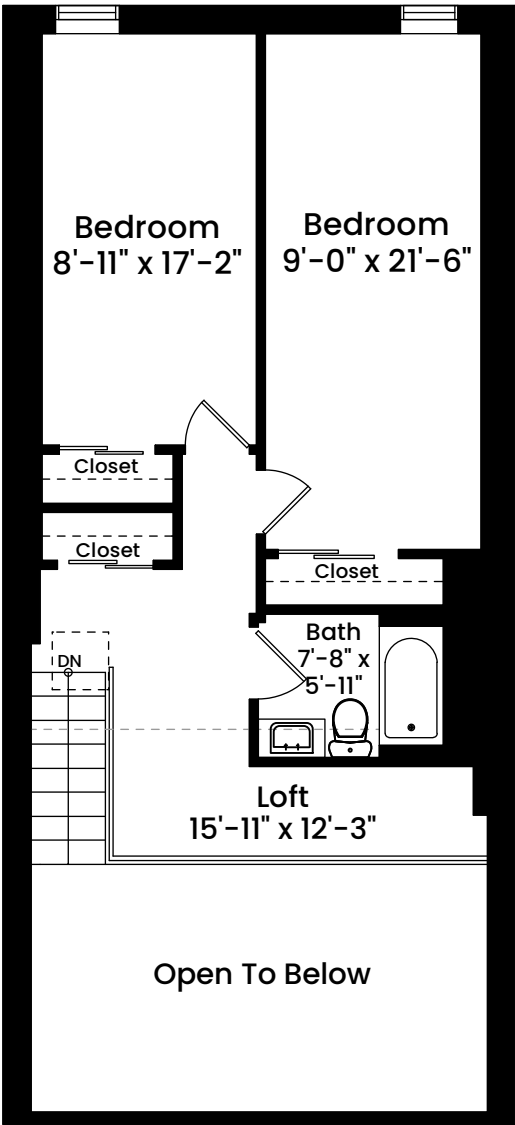


1 1 2 4 8
Scale 1/8" inch = 1 foot

Dimensions are not guaranteed and are provided for informational purposes only.
Individual room dimensions are not used to calculate overall square footage.
National Floor Plans follows ANSI guidelines for calculating square footage.
Unit area has been calculated to the interior face of demising and exterior walls.

110 Commercial Street, Unit 6 | Boston, MA 02109

SECOND FLOOR
CEILING HEIGHT 8'-7"



AREA CALCULATIONS	
Entry Level	24 SF
Second Floor	885 SF
Third Floor	641 SF
Total Unit Living Area	1,550 SF
Deck	84 SF
Total Area	1,634 SF

Architecturally drafted in February 2024 by:
National Floor Plans (800) 328-0217
Associate Member | American Institute of Architects
Contact www.nationalfloorplans.com for .dwg AutoCAD files
or square footage questions about this property.



1 1 2 4 8
Scale 1/8th inch = 1 foot

Dimensions are not guaranteed and are provided for informational purposes only.
Individual room dimensions are not used to calculate overall square footage.
National Floor Plans follows ANSI guidelines for calculating square footage.
Unit area has been calculated to the interior face of demising and exterior walls.