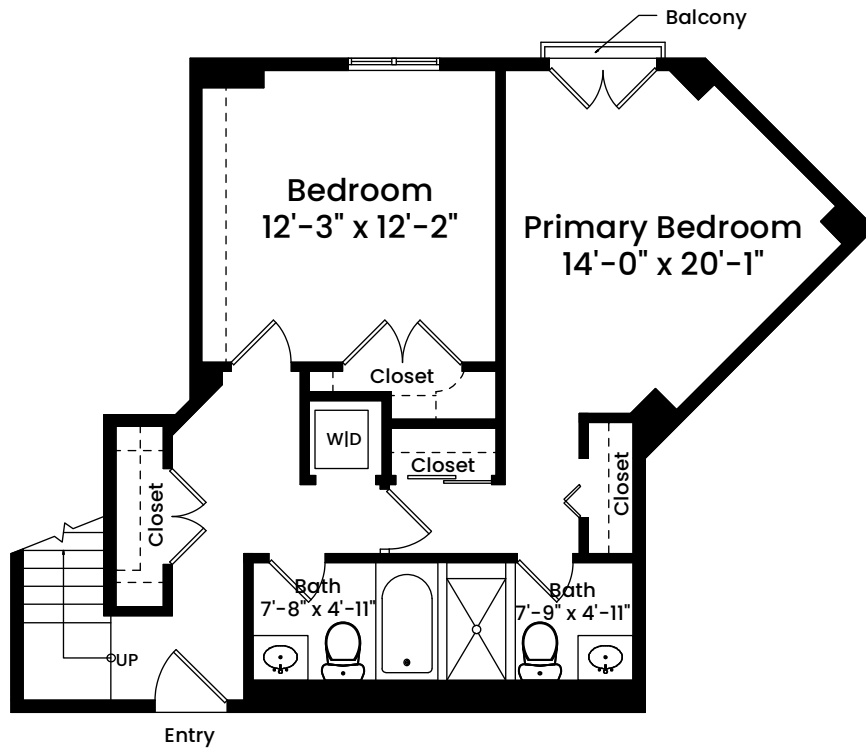


100 Fulton Street, Unit 5V | Boston, MA 02109

FIRST FLOOR CEILING HEIGHT 6'-10"



Architecturally drafted in October 2023 by:
National Floor Plans (800) 328-0217
Associate Member | American Institute of Architects
Contact www.nationalfloorplans.com for .dwg AutoCAD files
or square footage questions about this property.

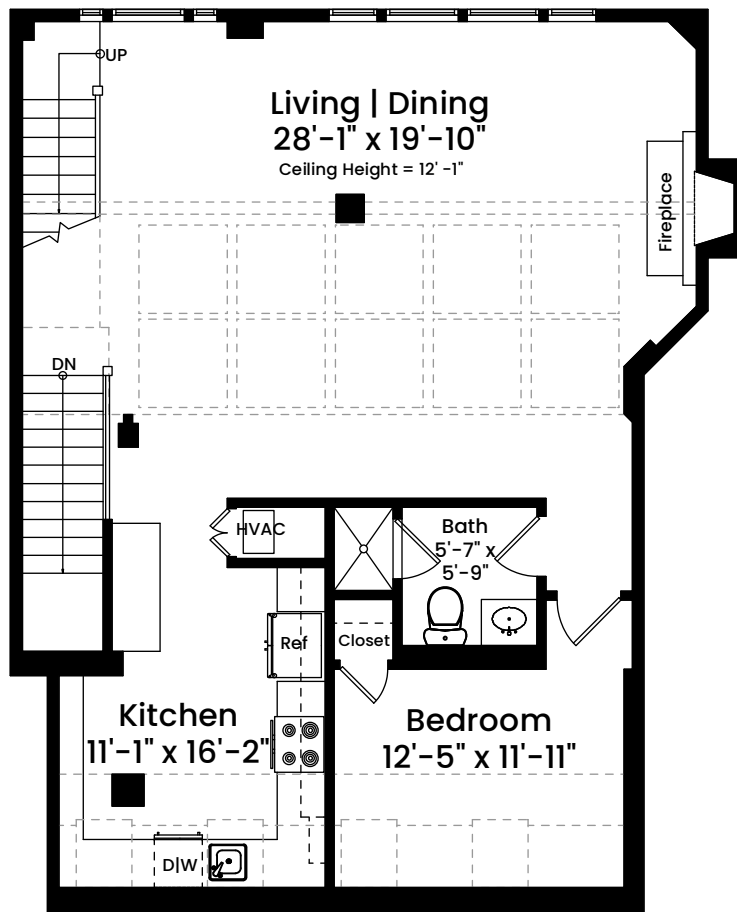


1 1 2 4 8
Scale 1/8" inch = 1 foot

Dimensions are not guaranteed and are provided for informational purposes only.
Individual room dimensions are not used to calculate overall square footage.
National Floor Plans follows ANSI guidelines for calculating square footage.

100 Fulton Street, Unit 5V | Boston, MA 02109

SECOND FLOOR CEILING HEIGHT 7'-5"



Architecturally drafted in October 2023 by:
National Floor Plans (800) 328-0217
Associate Member | American Institute of Architects
Contact www.nationalfloorplans.com for .dwg AutoCAD files
or square footage questions about this property.



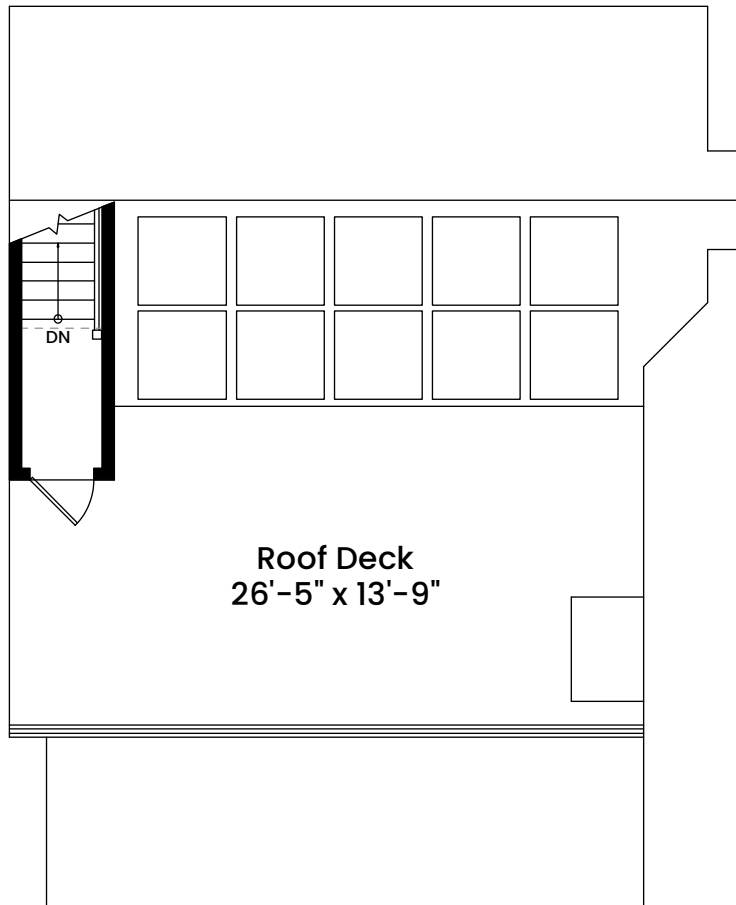
1 1 2 4 8
Scale 1/8" inch = 1 foot

Dimensions are not guaranteed and are provided for informational purposes only.
Individual room dimensions are not used to calculate overall square footage.
National Floor Plans follows ANSI guidelines for calculating square footage.

100 Fulton Street, Unit 5V | Boston, MA 02109

SECOND FLOOR

HEADHOUSE CEILING HEIGHT 7'-6"



Architecturally drafted in October 2023 by:
National Floor Plans (800) 328-0217
Associate Member | American Institute of Architects
Contact www.nationalfloorplans.com for .dwg AutoCAD files
or square footage questions about this property.



1 1 2 4 8
Scale 1/8" = 1 foot

Dimensions are not guaranteed and are provided for informational purposes only.
Individual room dimensions are not used to calculate overall square footage.
National Floor Plans follows ANSI guidelines for calculating square footage.